



LOCKE & ENGLAND

AUCTIONEERS & VALUERS

MAY SALE OF

Antique Furniture & Collectors' items

VIEWING

Antique Furniture & Collectors' items,

Saturday 21st May – 10am - 2pm

Tuesday 24th May – 9am - 5pm

Wednesday 25th May – 9am - 7pm,

Morning of sale from 9am - 11am

AUCTION

Antique Furniture & Collectors' items,

Thursday 26th May 2022

Commencing at 11.00am

LIVE INTERNET BIDDING



CATALOGUES

£5 by post, online at

www.leauction.co.uk



Valuation Day of Antiques, Jewellery and Collectables

VALUATIONS BY APPOINTMENT

Tuesday 24th May 2022

Commencing at 12:00pm - 4:00pm

**To book your 15-minute appointment slot in advance.
Contact the saleroom 01926 889 100 or email info@leauction.co.uk**



LOCKE & ENGLAND

AUCTIONEERS & VALUERS

Leamington Auction Centre

12 Guy St, Leamington Spa, CV32 4RT

info@leauction.co.uk 01926 889100

www.leauction.co.uk

*Furniture
and Clocks*



Furniture and Clocks

1

A late 17th century style oak refectory table, the moulded two piece top on six turned legs united by stretchers, h. 73 cm, l. 182 cm, d. 68 cm £300 - £500



Lot 1

2

An 18th oak, mahogany and inlaid dresser, the plate rack with fixed shelves flanked by split turned mouldings, over the break front base with four central drawers flanked by a drawer over blind panel cupboard door on bracket feet, h.203 cm, w. 61 cm, d. 40 cm £300 - £500



Lot 3

3

A mid 18th century oak chest of two short over three long drawers on bracket feet, h. 91 cm, w. 104 cm, d. 52 cm £200 - £300

Lot 2



Lot 4

4

A mid 17th century oak and marquetry coffer, the top lifting to reveal a vacant interior over the lunette carved entablature over three arch panels with bog oak and holly(?) floral inlay, h. 74 cm, w. 156 cm, d. 55 cm *£400 - £600*

5

An early 18th century beech and fruitwood side table, the moulded top over two drawers on cabriole legs, h. 65 cm, w. 74 cm, d. 49 cm *£150 - £250*

6

A 19th century ash and elm Windsor chair, the hoop back with pierced splat and turned supports over the turned legs and stretchers, h. 115 cm, w. 65 cm, d. 66 cm *£120 - £180*



Lot 6

7

A 19th century and later oak cricket table, the circular top on three legs, h. 72 cm, dia. 68 cm *£50 - £80*

8

An early 18th oak six plank coffer, the moulded top lifting to reveal a vacant interior, h. 59 cm, w. 122 cm, d. 44 cm *£100 - £150*

9

A 17th century style oak dresser base, the top over three panel front drawers over carved legs and pot board, h. 84 cm, l. 197 cm, d. 53 cm *£200 - £300*



Lot 9



Lot 10

10

A late 19th century oak and brass mounted hall seat by James Shoolbred, Tottenham Court Road, London, h. 63 cm, w. 54 cm, d. 32 cm

£200 - £300

11

An 18th century and later oak tripod table, the circular top on a turned column and three splay legs, h. 67 cm, dia. 66 cm

£50 - £80



Lot 13

13

A 19th century scumbled pine Gothic door, the three apertures with cast iron lattice work over the three panel base, with cast iron hinges and handle, purportedly from Rugby school, h. 279 cm, w. 161 cm

£200 - £400



Lot 12

12

A reproduction 19th century style oak and brass banded barrel with armorial crest, h. 52 cm, w. 46 cm, d. 23 cm

£80 - £120

14

An 18th century and later oak candle stand, the dish top over a turned column and three legs, h. 84 cm, dia. 28 cm

£40 - £60



Lot 14

15

An 18th century and later oak single drawer side table on turned legs, h. 69 cm, w. 88 cm, d. 54 cm

£80 - £120

16

An early 19th century oak armchair upholstered in a cut green fabric, the turned frame on turned front legs, h. 104 cm, w. 72 cm, d. 100 cm

£80 - £120



Lot 17

17

A late 17th century oak coffer, the three panel top lifting to reveal a vacant interior with candle box over the three panel front, h. 69 cm, w. 119 cm, d. 52 cm

£100 - £200

18

An early 19th century Anglo-Indian rosewood dining chair, the carved cresting rail over a pierced splat, tooled leather seat, carved cabriole legs and ball and claw feet, h. 102 cm, w. 57 cm, d. 48 cm

£60 - £80

19

A matched pair of Continental early 18th century walnut side chairs upholstered in a pink fabric, h. 126 cm, w. 47 cm, d. 48 cm

£100 - £200

20

A late 17th century oak six plank coffer, the top lifting to reveal a vacant interior, h. 62 cm, w. 118 cm, d. 36 cm

£150 - £250

21

An 18th century oak and brass banded wine cooler on later base, the oval body with brass lion mask handles on four legs, h. 61 cm, w. 60 cm, d. 51 cm

£100 - £150



Lot 21



22

A 19th century gothic oak gong, the pierced, chamfered and polychrome frame holding the hammered brass gong, h. 107 cm, w. 61 cm, d. 40 cm

£80 - £120



23

A late 18th century mahogany, parcel gilt, brass mounted, and marble topped sideboard, the yellow veined marble top over ram's head mask flanked by four fluted drawers, on tapering fluted legs. h. 94 cm, l. 222 cm, d. 76 cm

£500 - £800

24

A 19th century and later mahogany half tester bed, the canopy upholstered in a floral striped fabric with parrot design, the footboard with barley twist end supports flanking flame mahogany trefoil panel. h. 203 cm l. 214 cm w. 148 cm

£150 - £250

25

A late 18th century mahogany bow front chest of two short over three long drawers on bracket feet, h. 106 cm, w. 105 cm, d. 56 cm

£80 - £120



Lot 26



Lot 27

26

An early 20th century chinoiserie oval bevel glass mirror, h. 55 cm, w. 65 cm

£50 - £80

27

An 18th century and later mahogany chest on stand, the cavetto cornice over two short and three long drawers on the later base with three drawers carried on cabriole legs, h. 162 cm, w. 101 cm, d. 52 cm
£200 - £300



Lot 28

28

A 19th century French walnut stool of trapezium form upholstered in a floral patterned fabric the serpentine front on carved cabriole legs, h. 41 cm, w. 131 cm, d. 60 cm
£80 - £120

29

A 19th century rosewood and satinwood side table, the parquetry top on barley twist end supports and stretcher, h. 71 cm, w. 93 cm, d. 45 cm
£60 - £80

30

A Victorian mahogany toilet mirror, the arch top plate in moulded frame supported on barley twist over the bow front base with trinket drawer, h. 78 cm, w. 69 cm, d. 28 cm
£50 - £80



Lot 29 (detail of top)

31

A William IV rosewood card table, the fold over top supported on a swivel action above the faceted column and circular platform base over four hairy paw feet, h. 74 cm, w. 92 cm, d. 46 cm
£150 - £250

32

A 19th century rosewood side cabinet, the top over single drawer and two cupboard doors on plinth base, h. 92 cm, w. 102 cm, d. 57 cm
£50 - £80



Lot 30

33

An 18th century mahogany card table, the fold over top supported on a single gate action on square section tapering legs, h. 73 cm, w. 84 cm, d. 42 cm

£50 - £80



Lot 34

34

An early 20th century walnut two tier occasional table, the circular top and undertier supported on slatted legs, h. 65 cm, dia. 66cm

£80 - £120

35

A 19th century cast iron and brass demi-lune umbrella/stick stand, h. 62 cm, w. 42 cm, d. 21 cm

£80 - £120

36

An early 20th century silvered grotto stool, the shell seat supported on three dolphin legs, h. 57 cm, w. 44 cm, d. 45 cm

£100 - £150

37

An 18th century satinwood wine table, the octagonal banded top over a turned column and three scroll legs, h. 66.5 cm, dia. 38 cm

£200 - £300

38

An 18th century mahogany and oak wing armchair frame, h. 120 cm, w. 80 cm, d. 80 cm

£100 - £200

39

A late 19th century mahogany four fold screen with patterned fabric panels, h. 181 cm, max length 238 cm

£80 - £120

40

An 18th century red walnut stool base on cabriole legs, h. 25 cm, w. 69 cm, d. 44 cm

£50 - £80

41

A late 19th century ebonized and parcel gilt occasional table, the moulded top over the pierced and moulded base, h. 66 cm, w. 62 cm, d. 38 cm

£80 - £120

42

A 19th century and later mahogany full tester four poster bed, the top with pleated blue fabric over turned and carved front posts and a later upholstered head board, h. 214 cm, l. 211 cm, w. 154 cm

£100 - £200



Lot 37





Lot 43

43

An early 19th century rosewood X-frame stool, the floral needlework seat over the moulded frame with a turned stretcher on floral carved feet, h. 45 cm, w. 55 cm, d. 46 cm £200 - £300

44

An 18th century mahogany bookcase, the later cornice above two glazed doors enclosing adjustable shelving, on the base with two short over two long drawers. h. 231 cm, w. 138 cm, d. 58 cm £200 - £300

45

A large early 20th century mahogany stool, the eight tapering legs supporting the top rail, h. 41 cm, l. 294 cm, d. 51 cm £80 - £120



46

An Edwardian walnut Howard style armchair, upholstered in calico on ceramic castors, h. 62 cm, w. 86 cm, d. 114 cm £200 - £300

47

A 19th century embossed and polychrome leather four fold screen with gold ground floral and urn panels, h. 199 cm, max length 240 cm £100 - £200

48

A 19th century pollard oak framed mirror, h. 55 cm, w. 43 cm £50 - £80

Lot 47



49

A late 19th/early 20th century mahogany chest of two short over three long drawers on bun feet, h. 107 cm, w. 106 cm, d. 50 cm

£100 - £150

50

An 18th century mahogany tilt top tripod table, the dish top on turned column, h. 68 cm, dia. 56 cm

£50 - £80



51

An early 20th century mahogany three fold screen, glazed panels above fielded blind panels, h. 152 cm, max length 165 cm

£80 - £120



Lot 52

52

A late 18th century mahogany chest of two short over three long drawers, the caddy top over the cottage cut carcass on later bracket feet, h. 99 cm, w. 91 cm, d. 47 cm

£150 - £250



53

An Edwardian walnut armchair upholstered in a cut grey fabric on turned front legs, h. 90 cm, w. 77 cm, d. 84 cm

£50 - £80

54

An early 19th century mahogany linen press, the cornice over two flame mahogany doors enclosing slides over the base with two short over two long drawers on splay feet, h. 203 cm, w. 192 cm, d. 56 cm *£80 - £120*

55

A George III mahogany, boxwood and ebony strung bow front sideboard, the central drawer flanked by cupboards on square section tapering legs, h. 93 cm, w. 171 cm, d. 70 cm *£80 - £120*



56

An early 19th century mahogany Gothic hall chair, the carved quatrefoil back with armorial shield below a painted crown over the carved seat, h. 88 cm, w. 39 cm, d. 45 cm *£100 - £150*

Lot 56

57

A 19th century walnut three fold screen, the finials over patterned fabric panels on turned feet and castors, h. 176 cm, max length 240 cm *£80 - £120*

58

A late 19th century Moorish carved and mother of pearl inlaid occasional table. the octagonal top over the galleried frieze and turned legs joined by galleried stretchers, h. 74 cm, dia. 57 cm *£50 - £80*

59

A mid 18th century walnut bureau bookcase, the cavetto cornice over two astragal glazed doors above the fall front revealing fitted interior with secret drawers, over one long, two short and two long drawers, h. 201 cm, w. 99 cm, d. 55 cm *£150 - £250*



Lot 58



Lot 60

60

A 19th century mahogany chest of drawers, the top over single frieze drawer above two short and four long drawers on plinth base, h. 136 cm, w. 117 cm, d. 62 cm *£150 - £200*



Lot 61

61

An early 19th century mahogany hall chair in the style of Gillows, the carved back over the banded and ebony strung seat on the turned and carved legs, h. 84 cm, w. 46 cm, d. 48 cm

£200 - £300



Lot 64

64

An Arts and Crafts mahogany desk, the superstructure with leaded light cupboard doors and drawers over the fold out writing surface supported on a long drawer above the undertier, h. 141 cm, w. 65 cm, d. 39 cm

£100 - £200

65

A pair of 19th century cast iron umbrella/stick stands, h. 58 cm, w. 22 cm, d. 22 cm

£100 - £200

66

An 18th century mahogany fretwork mirror, h. 67 cm, w. 48 cm

£80 - £120



Lot 62

62

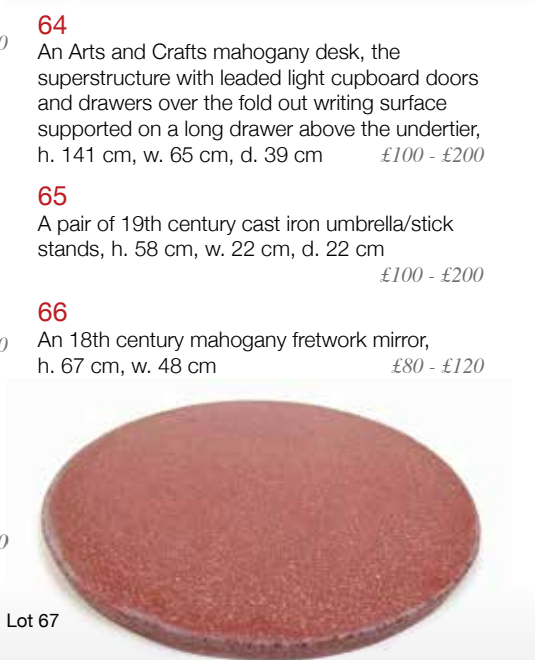
An 18th century fruitwood tripod table/candle stand base with a dish amboyna top, h. 72 cm, dia. 29 cm

£100 - £150

63

A 19th century brass and copper adjustable oil standard lamp, the embossed bowl above a Corinthian column on paw feet

£80 - £120



Lot 67

67

A porphyry circular table top, dia, 71 cm
£80 - £120



Lot 68

68

A Regency mahogany canterbury, the divisions with turned supports over the single drawer on turned legs, h. 50 cm, w. 51 cm, d. 37 cm
£150 - £250

69

An early 19th century rosewood games/work table, the fold over top with an inlaid chess board supported on a swivel action above the drawer and work box over a platform base, h. 74 cm, w. 51 cm, d. 25 cm
£100 - £150

70

A pair of 18th century mahogany dining chairs, the pierced splat over the pad seats upholstered in a patterned gold fabric, h. 93 cm, w. 54 cm, d. 48 cm
£50 - £80

71

A modern embossed silver plated, brass effect and mirror 'throne' chair with a striped fabric upholstered pad seat, h. 101 cm, w. 114 cm, d. 54 cm
£100 - £200

72

An early 20th century Regency style mahogany quartetto nest of tables, h. 71 cm, w. 56 cm, d. 38 cm
£70 - £100



Lot 73

73

A Regency gilt wood convex mirror. the moulded frame with spheres surrounding the circular plate, dia. 45 cm
£200 - £300

74

A 19th century carved giltwood settee upholstered in a striped pink fabric, the floral top rail above the serpentine seat on cabriole legs, h. 96 cm, w. 169 cm, d. 82 cm
£100 - £200



Lot 71



Lot 75

75

A handwoven Persian (?) rug, the multi line border surrounding the striped field, 214 cm x 128 cm
£100 - £200

76

An early 19th century and later mahogany extending dining table, the two D-ends on turned legs incorporating two later leaf's, h. 76 cm, w. 109 cm, max length 247 cm
£70 - £100

77

A handwoven Afghan rug, the multi line border surrounding the peach ground field with two columns of octagons, 257 cm x 186 cm
£70 - £100



Lot 78

78

A 19th century Rococo carved pine mirror, the frame surmounted with a nest over swags, garlands and masks with a green man mask at the base, 100 cm x 60 cm
£80 - £120



Lot 79

79

A late Victorian oak free standing twin pedestal desk, the top with a brown tooled leather insert over the central drawer flanked by two columns of four drawers, h. 74 cm, w. 129 cm, d. 69 cm

£150 - £250

80

A handwoven Turkish rug, the triple line border surrounding the red ground field with serrated leaf and spider motif's, 287 cm x 190 cm

£100 - £200

81

A 19th century carved oak three fold screen with crewel work panels, h. 182 cm, max w. 210

£80 - £120

82

A handwoven Caucasian rug, the multi line border surrounding a red ground field with animal and plant motif's, 212 cm x 171 cm

£50 - £80

83

An early 19th century mahogany four fold screen with brown fabric panels, h. 184 cm, max w. 256 cm

£100 - £150

84

A set of eight (6+2) Regency mahogany dining chairs, the reeded top rail above the reeded swag back rail with starburst terminals over the stuff over seat on sabre legs, h. 84 cm, w. 55 cm, d. 56 cm

£500 - £800

85

Five early 19th century and later circular mirrors including walnut, oak, giltwood framed with convex and beveled plates, max dia. 30 cm

£100 - £200



Lot 84 (part)

86

A modern handwoven Turkish rug, the border surrounding the red ground field with geometric design, 225 cm x 163 cm

£50 - £80

87

A 19th century Anglo-Indian carved and pierced teak over mantle mirror, h. 130 cm, l. 177 cm

£200 - £300



Lot 87



Lot 88

88

An early 20th century Cotswold school limed oak miniature chest, the top lifting with two dummy drawers over two long drawers on ogee bracket feet, h. 24.5 cm, w. 27 cm, d. 15.5 cm

£120 - £180



Lot 91

91

An 18th century oak long case clock, the enameled face with painted spandrels, Roman and Arabic numerals, pierced hands, date aperture and a thirty hour movement, signed Godfrey of Kidderminster, h. 192 cm, w. 51 cm, d. 26 cm

£100 - £150



89

A roll of Howard and Sons ticking, approx 50 meters

£200 - £300

90

A 19th century mahogany long case clock time piece (no movement, changed to quartz movement), the enameled face with moon phase dial over Roman numerals, pierced hands, painted spandrels and second dial, indistinctly signed, h. 237 cm, w. 64 cm, d. 26 cm

£80 - £120



Lot 92

92

An 18th century elm and oak long case clock, the engraved brass face with single hand and Roman numerals and a thirty hour movement, h. 186 cm, w. 46 cm, d. 26 cm *£150 - £250*

93

A late 19th century French brass and polychrome mantle clock, the face with Roman numerals flanked by classical ladies on a giltwood plinth, h. 47 cm, w. 28 cm, d. 20 cm *£150 - £250*

94

A late 19th century white marble and gilt metal mantle clock, the enameled face with Roman numerals alongside the Madonna and child on an ebonized base, h. 36 cm, w. 47 cm, d. 21 cm *£80 - £120*

95

An early 20th century French brass and five beveled glass carriage clock, h. 14 cm *£50 - £80*

96

A South American carved hardwood coffee table, the top with two carved bird panels surrounded by stylized frog panels and geometric panels, h. 49 cm, l. 239 cm, d. 94 cm *£150 - £250*



Lot 95

97

An 18th century and later mahogany, boxwood strung and purpleheart banded occasional table on square section tapering legs, h. 68 cm, w. 65 cm, d. 36 cm *£50 - £80*

98

An early 19th century mahogany tilt top tripod table, the rectangular top on a turned column, h. 71 cm, w. 54 cm, d. 53 cm *£40 - £60*

99

A pair of 18th century and later satinwood drop leaf side tables, the tops over single drawer on square section tapering legs, h. 71.5 cm, w. 69 cm, d. 56 cm *£200 - £300*



Lot 99



Lot 96 (detail)



Lot 100 (top)

100

An 18th century satinwood and inlaid gueridon/occasional table, the circular top over three C-scroll legs united by an under tier with a floral marquetry patera, h. 71 cm, dia. 65 cm *£200 - £300*

101

An 18th century satinwood bookcase/display cabinet, the dome top over the single door with brass wire mesh enclosing a satin lined interior with later glass shelves above the base with two short drawers and two cupboard doors with pleated satin and brass wire mesh on tapering feet, h. 196 cm, w. 96 cm, d. 37 cm *£1000 - £2000*

102

An early 19th century and later mahogany and other single drawer side table on turned supports, h. 75 cm, w. 50 cm, d. 37 cm *£40 - £60*



Lot 101



Lot 103

103

An early 19th century French Empire possibly pear wood chest of four long drawers, the drawers with ormolu handles and escutcheons with classical mask back plates on a plinth base, h. 88 cm, w. 111 cm, d. 58 cm *£300 - £500*

104

A Victorian rosewood and inlaid games table, the top with satinwood and mahogany chess board sliding to reveal a fabric backgammon board on turned and carved end supports, h. 72 cm, w. 86 cm, d. 51 cm *£80 - £120*



Lot 105

105

A Victorian rosewood secretaire Wellington chest, the top over single drawer and secretaire drawer with fitted interior above four further drawers on plinth base, h. 121 cm, w. 60 cm, d. 44 cm *£400 - £600*

106

An early 20th century Egyptian revival lion stool, the spelter lion mask over the seat upholstered in snake skin with Tutankhamun studs and horsehair tail on four legs, h. 62 cm, l. 90 cm, w. 41 cm *£300 - £500*



Lot 106



Lot 107

107

A late 18th century mahogany bureau bookcase, the dentil cornice over two astragal glazed doors enclosing two adjustable shelves over the fall front with fitted interior above two short drawers and two cupboard doors with dummy drawers to front enclosing slides on ogee bracket feet, h. 205 cm, w. 128 cm, d. 60 cm *£200 - £300*



Lot 108

108

A late 17th/early 18th century oak coffer, the top lifting to reveal a vacant interior over the paneled front, h. 53 cm, w. 100 cm, d. 39.5 cm

£100 - £150



Lot 109

109

A 19th century mahogany bow front chest of two short over four long drawers on turned feet, h. 127 cm, w. 125 cm, d. 56 cm

£100 - £150

110

An 18th century mahogany drop leaf table, the circular top supported on a single gate action on pad feet, h. 70 cm, w. 107 cm, d. 106 cm

£50 - £80



Lot 111

111

A 17th century oak coffer, the top lifting to reveal a vacant interior with candle box over the four linen fold panel front, h. 62 cm, w. 116 cm, d. 41 cm

£200 - £300

112 - 149

Spare Lots

Pictures & Prints



Pictures and Maps

150

Cecil Aldin (1870-1935)
a pair of hunting scenes
prints
37 cm x 101 cm each

£50 - £80



Lot 151

151

English, 20th century school huntsman returning
home with hounds
oil on canvas
unsigned
24 cm x 34 cm

£80 - £120



Lot 153



Lot 152

152

English 19th century school three terriers
chasing a rabbit
oil on canvas
unsigned
29 cm x 37 cm

£150 - £250

153

Johannes Schelfman
(Dutch b. 1903)
three cows by lake
oil on board
signed
50 cm x 60 cm

£100 - £200

154

Donna Crawshaw
(British b.1960)
'Palameno and friends'
oil on canvas
signed
39 cm x 49 cm

£100 - £150



Lot 155



Lot 156

155

William McAlpine (British, fl.1840-1880)
fishing boats before castle
oil on canvas
signed
73 cm x 124 cm

£300 - £500

156

attributed to Adriaen van Diest
(Dutch 1655-1704)
hunting dogs chasing a rabbit with castle in
background
oil on canvas
unsigned
70 cm x 135 cm

£3000 - £5000

157

English 19th century
school
woman carrying
firewood by river
oil on canvas
unsigned
49 cm x 75 cm

£100 - £150



Lot 159

158

English 19th century
school
woman walking
along a path by a
lake
oil on canvas
unsigned
49 cm x 75 cm

£100 - £150

159

J Wallace
(British, late 19th century)
harvest scene
oil on canvas
signed and dated 1881
59 cm x 90 cm

£150 - £250



Lot 160

160

Clive Newcome
trees by river
watercolour
signed
52 cm x 73 cm

£250 - £350

161

Frederick William
Newton Whitehead
(British 1853-1938)
washerwoman by river
signed
oil on canvas laid on board
22 cm x 39 cm

£200 - £300



Lot 161

162

Graham Williams
(British fl.1910-1945, aka Francis
Jamieson) Highlands scene
signed Graham Williams
oil on canvas
39 cm x 59 cm

£100 - £200

163

Albert George Adams (British fl.1854-1887)
figure by river
signed A.G. Adams and dated 1887
watercolour
35 cm x 53 cm

£40 - £60

164

YuwanYuwan (Aboriginal, Australia)
Wolerrk the Kangaroo
unsigned painting on board
37 cm x 67 cm

£100 - £200



Lot 165

165

Gwilym Prichard (Welsh 1931-2015)
mountain landscape
signed
watercolour
53 cm x 73 cm

£150 - £250

166

Charles Hunt after P. Mathews
'The trial of Bill Burns under Martin's Act' the
first animal cruelty case coloured aquatint
29 cm x 43 cm

£50 - £80

167

attributed to John Varley (British 1778-1842)
lake and country road scenes (2)
signed
watercolours
9.5 cm x 14.5 cm (image only)

£50 - £80

168

Jan Poortenaar (Dutch 1886-1958)
'Evening. A Country Road In Holland'
signed etching, published by 'The Museum
Galleries'
39 cm x 30 cm

£70 - £100



Lot 169

169

John Neale (British, contemporary)
roadside farm house in the snow
signed
oil on board
31 cm x 49 cm

£50 - £80

170

John Neale (British, contemporary)
boats at harbor
signed
oil on board
37 cm x 59 cm

£80 - £120

171

John Neale (British, contemporary)
Venetian scene with gondola
signed
oil on board
59 cm x 37 cm

£100 - £150



Lot 168



Lot 172

172

John Neale (British, contemporary)
sailing vessels on beach
signed
oil on board
100 cm x 45 cm

£150 - £250

173

Naomi Frears (British, contemporary)
'Mad About The Boy'
signed acrylic on paper
28 cm x 29 cm

£150 - £250



Lot 174

174

after Pablo Picasso (Spanish 1881-1973)
Bacchanalian scene
signed in pencil print
20.5 cm x 28 cm
(no provenance, so offered as 'after' Picasso)

£200 - £300



Lot 175

175

18th century English school
comical kitchen scene
unsigned oil on board
26 cm x 34 cm

£250 - £350

176

19th century English school
figure walking along mountain path
unsigned
oil on board
25 cm x 30 cm

£70 - £100

177

20th century Continental
school
harbor scene
signed, illegible
oil on canvas
19 cm x 39 cm £40 - £60

178

19th century English
school
cow and sheep under a
tree
unsigned
oil on canvas
41 cm x 51 cm £80 - £120

179

early 20th century
English school
seated gentleman
unsigned
oil on canvas
35 cm x 24 cm

£60 - £80

180

John Lines RBSA (b. 1938)
steam train at Snowdon
signed
oil on board
53 cm x 70 cm

£100 - £200



Lot 180



Lot 181

181

Basil Nightingale (British 1864-1940)
mounted huntsman jumping a gate
signed and dated 1920
charcoal and chalk on paper
33 cm x 48 cm

£100 - £150



Lot 182

182

Johnny Gaston (b. 1955)
portrait of military gentleman
signed and dated '82' Paris
oil on board
24 cm x 19 cm

£80 - £120



Lot 183

185

Johnny Gaston (b. 1955)
horse riders taking refreshment
signed and dated '88'
oil on board
29 cm x 39 cm *£80 - £120*

186

Johnny Gaston (b. 1955)
portrait of an elegant lady
signed and dated 1984
oil on domed panel
32 cm x 27 cm *£80 - £120*

187

L. Jacob (contemporary)
Continental harbor scene and
couple on horseback (2)
signed
oil on domed panels
47 cm x 37 cm *£80 - £120*

188

map of 'The West Indies'
hand coloured print
37 cm x 49 cm *£40 - £60*

189

Ann Gore sampler
dated June 23rd 1837
needlework
45 cm x 33 cm *£100 - £200*

190 - 199

Spare Lots



Lot 185

183

Johnny Gaston (b. 1955)
ladies relaxing by a river
signed and dated '80'
oil on board
29 cm x 39 cm *£100 - £200*

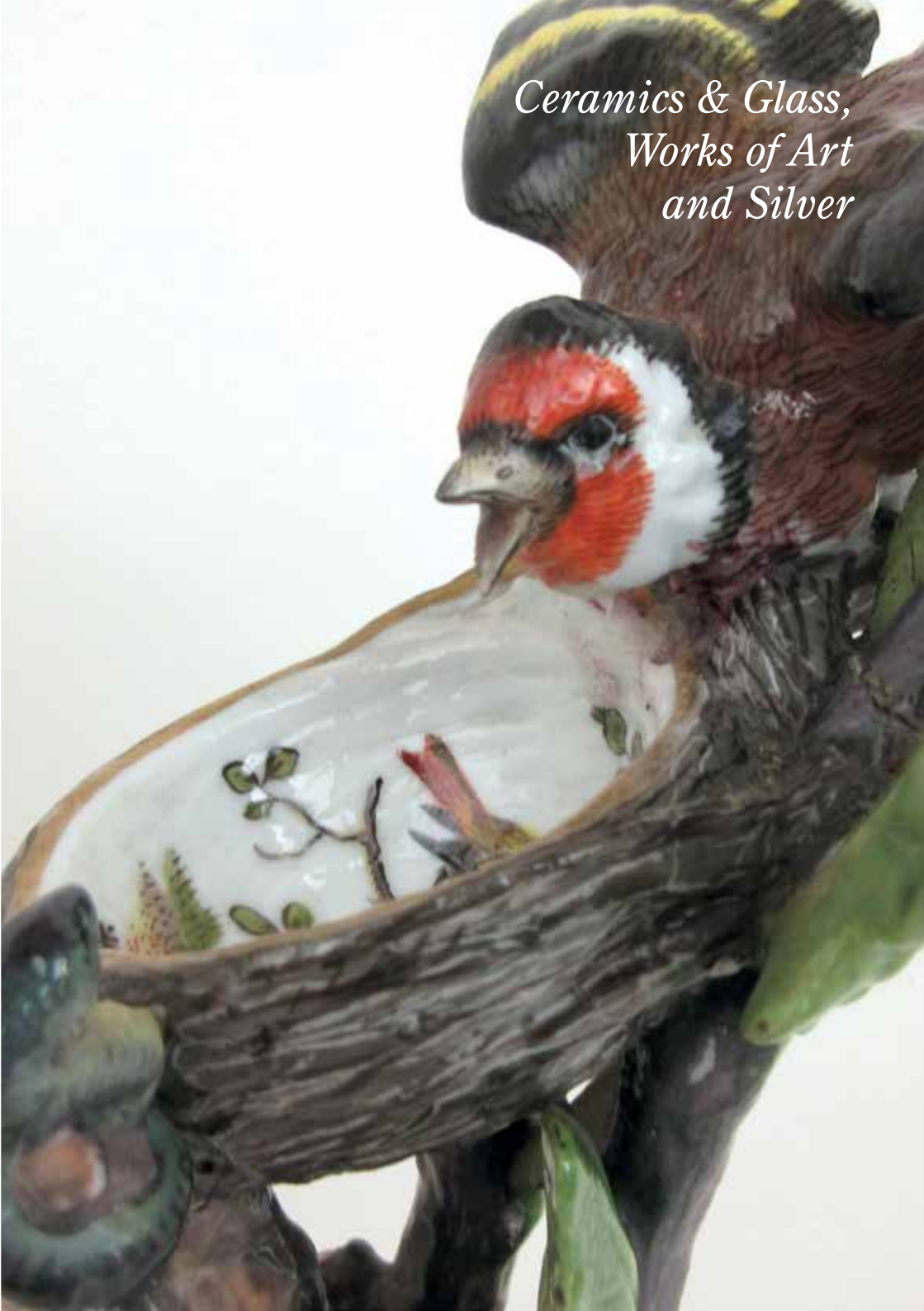
184

Johnny Gaston (b. 1955)
lady upon horse with dogs
signed and dated '87'
oil on board
39 cm x 29 cm *£100 - £150*



Lot 186

*Ceramics & Glass,
Works of Art
and Silver*



Ceramics & Glass, Works of Art and Silver

200

A large 19th century Japanese porcelain charger decorated in the imari pallet with a reticulated border, dia. 46 cm
£100 - £200

201

A large Italian glazed model of a dog, h. 108 cm
£150 - £250

202

A large early 20th century Chinese porcelain baluster vase, the body decorated with a butterfly and floral design. Together with associated stand, h. 48.5 cm
£100 - £200

203

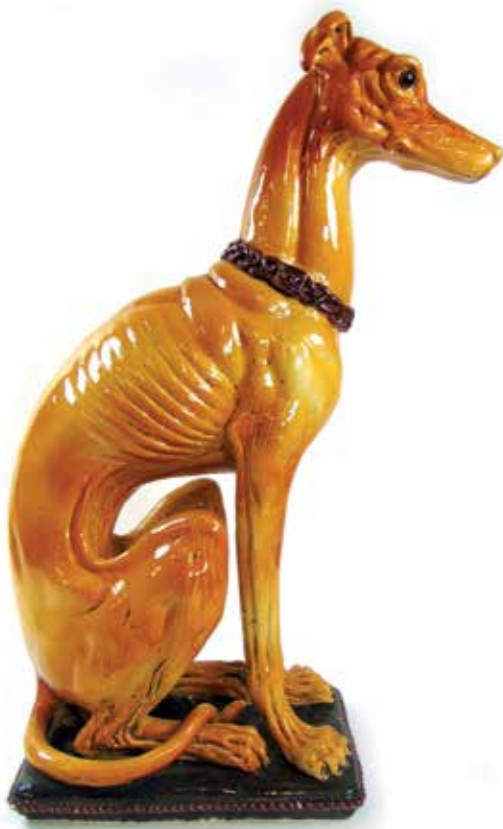
A collection of five late 19th/early 20th century Japanese imari pattern chargers, max dia. 36.5 cm
£80 - £120

204

A Ruskin pottery crystalline glazed vase of cylindrical form with flared rim. Impressed 'Ruskin England 1932' to base, h. 23.5 cm
£70 - £100



Lot 200



Lot 201

205

A Ruskin pottery egg shell lustre glazed bowl. Impressed 'Ruskin England 1922' to base, dia. 15.5 cm
£40 - £60



Lot 205



Lot 206

206

A later 20th century Orrefors art glass bowl decorated in a brown and yellow leaf design. Engraved 'Orrefors Craal No.233-70 Jan Johansson' to base, dia. 22 cm £200 - £300

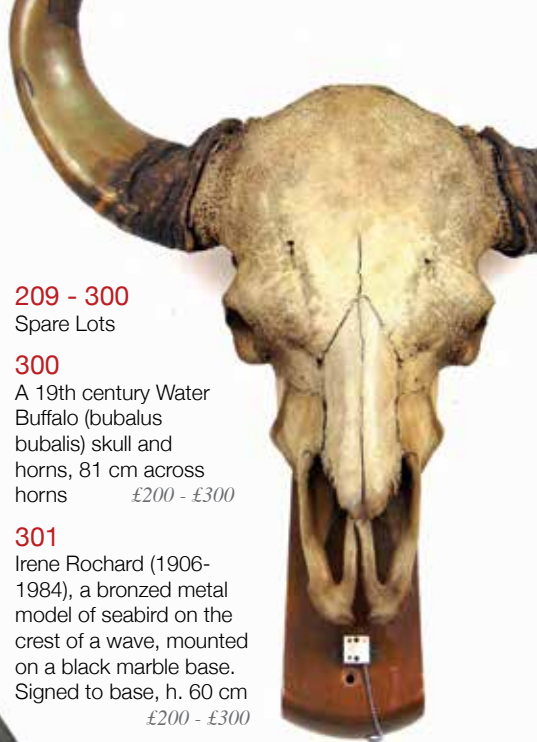
207

A small Moorcroft baluster vase decorated in the clematis pattern on a blue ground together with a pin tray decorated in the hibiscus pattern on a green ground, h. 10 cm £50 - £80



208

Two 19th century Meissen porcelain models of birds defending their nests, h. 22 cm £300 - £500



209 - 300

Spare Lots

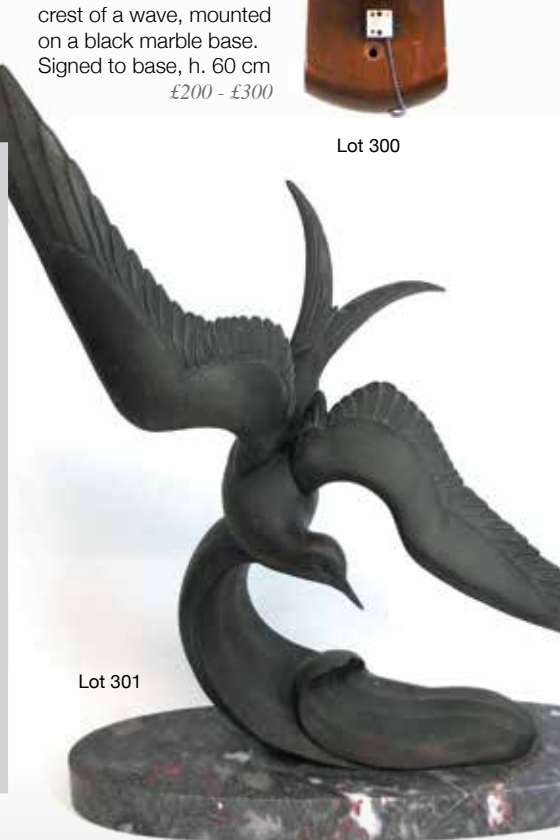
300

A 19th century Water Buffalo (bubalus bubalis) skull and horns, 81 cm across horns £200 - £300

301

Irene Rochard (1906-1984), a bronzed metal model of seabird on the crest of a wave, mounted on a black marble base. Signed to base, h. 60 cm £200 - £300

Lot 300



Lot 301



Lot 302

302

A large contemporary bronze model of a nude on a rock. Unsigned, h. 49 cm £200 - £300

303

Loet Vanderveena (1921-1915). A large bronze model of a seated cheetah. Signed 'Loet 157/1750' to base £150 - £250

Lot 303



304

James Killian Spratt (b.1950). A bronzed plaster model of a horse head. Signed 'J.Spratt Austin Prod Inc 1978' to back, h. 32 cm £50 - £80



Lot 305

305

A 20th century bronze model of a roaring tiger mounted on a white marble plinth. Unsigned, h. 10 cm £50 - £80

306

Chris Lane (Mid-20th century), 'Torso', Abstract stone sculpture on wooden base, Signed under base. £50 - £80



Lot 306



Lot 307

307

A large Kashmir papier mache work bowl with polychrome painted floral decoration, h. 19.5 cm, dia. 30.5 cm

£40 - £60

Lot 312

308

A late 19th/early 20th century painted wooden decoy duck, l. 38 cm

£80 - £120

309

A 20th century Benin carved octagonal wooden plaque depicting three figures, w. 31 cm

70 - £100

310

A 19th century percussion cap rifle with ram rod, l. 146 cm

£100 - £200

311

A 19th century percussion cap rifle with chequered grip and proof marks to barrel, l. 121 cm

£80 - £120

312

An 18th/19th century middle eastern flintlock rifle, the steel stock with engraved decoration and brass inlay, l. 133 cm

£150 - £250

313

A George V Highland infantry officers sword with cross guard, fish skin grip and leather field service scabbard, blade length 83.5 cm

£200 - £300

314

A 19th century Mckellen of Manchester/Thorntons Patent folding plate camera with case, time shutter, plates and two tripods

£100 - £150



Lot 315

315

A 19th century tortoiseshell and mother of pearl inlaid desk stand incorporating two inkwells and pen trays, central compartment, drawer and a bronze carry handle in the form of entwined serpents, w. 25 cm, d. 20 cm, h. 19 cm

£200 - £300



Lot 313



Lot 316

316

An 18th/19th century Indo-Persian micro mosaic inlaid vanity box with fold out mirror and full length drawer incorporating several compartments, w. 27.5 cm, d. 34.5 cm, h. 13 cm *£650 - £800*

317

A Regency mahogany sarcophagus shaped tea caddy, the interior with three compartments, w. 25 cm, d. 14 cm, h. 16 cm *£50 - £80*

318

A Victorian oak and brass mounted country house letter box in the manner of A.W.N Pugin, w. 35.5 cm, d. 23 cm, h. 24 cm *£300 - £500*



Lot 318

319

A Chinese cinnabar lacquered scholars seal paste pot carved in relief with birds amidst foliage. Possibly Ming dynasty, dia. 8.5 cm *£300 - £500*



Lot 319



Lot 320

320

A late 17th/early 18th century violin bearing the label of Joannes Schorn of Salzburg (1690-1716). Together with case, associated paperwork and two bows, one stamped 'Dodd'

£2000 - £3000

**321**

An early 20th century folding travelling chess set with carved boxwood pieces, Board 15.5 cm x 15.5 cm

£100 - £150

322

A 19th century stained Tagua nut chess set in wooden box, king h. 6 cm

£100 - £200

323

A 19th century stained bone Edinburgh or Northern Upright chess set, king h. 5.25 cm

£100 - £200

324

Two stamp albums containing a collection of British stamps from 1840- circa 1972, including penny black and red

£150 - £250

325

A set of three Georgian brass and steel fire irons, l. 75 cm

£80 - £120

326

A 19th century Tunbridge ware card case A/F

£40 - £60

327

A collection of 19th/early 20th century treen bottle and glass holders to include Mauchline ware

£100 - £200

328

A collection of 19th/early 20th century treen bottle holders, glass holders (without glasses) and trinket boxes to include Mauchline ware

£100 - £200

329

An early 20th century Indian carved stone grave stone, the mans head surrounded by flowers, h. 53 cm, w. 71 cm

£100 - £200

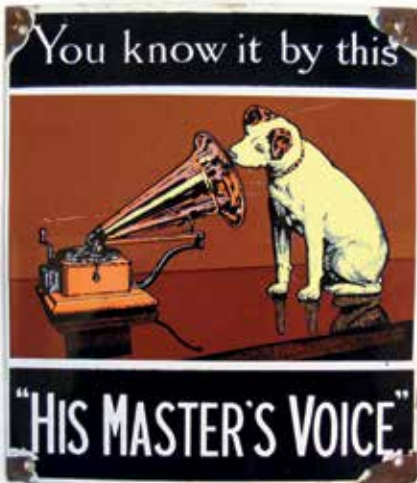


Lot 327



330

A part built live steam locomotive with tender, associated track and spare parts, locomotive h. 52 cm, l. 145 cm, w. 33 cm £1000 - £2000



Lot 331

331

A small enameled advertising sign for 'His Master's Voice', 25 cm x 22 cm £40 - £60

332

A brass porthole frame with later mirror insert, dia. 30 cm £50 - £80

333

A reproduction Nazi SA honor dagger, l. 37.3 cm £100 - £200

334

A made up chess set to include Jaques pieces £50 - £80

335

Taxidermy - a late 19th century cased study of a gull in naturalistic surrounds, by T. Harbour of Reading, h. 35 cm, w. 41 cm £40 - £60



Lot 336

336

Taxidermy - two late 19th/early 20th century mounted foxes heads on shield backs

£40 - £60





Lot 337

337

Taxidermy - an early 20th century ram's head with horns, 32 cm across horns £30 - £50

338

Taxidermy - two mounted study's of deer's heads on shield backs, max h. 42 cm £50 - £80

339

Taxidermy - two mounted studies of a snarling badger and an otter by Williams of Dublin £70 - £100



Lot 342

340

Taxidermy - a cased study of a hunting weasel holding a bird set in naturalistic surroundings £40 - £60

341

Taxidermy - two cased studies of standing stoats, max h. 30 cm £70 - £100

342

Taxidermy - A late 19th century mounted boars head on oak shield back, h. 74 cm £100 - £200

343 - 359

Spare Lots

360

Steiff - four boxed bears including 'Bobby' 021886, 'Knuffi' 017803, limited edition 'Christmas Teddy Bear' 01828/2006 and limited edition 'Teddy Bear Skier' 00519/1500 with certificate £80 - £120

361

Steiff - eleven bears including three limited edition, three miniature, 'Blackbear', 'Bodvoc' Ruler of the Cotswolds, 'Drusus', 1905 Classic and a Christmas bear £50 - £80

362

Steiff - Eight bears including 'Original' 008016 with growler, limited edition 'Meisje Beer' 00204/1500, three other limited editions and three Pekingese £70 - £100

363

Steiff - five bears including 'Molly Braunbar' 0343/25, 'Floppy Teddy' 5700/30, boxed 'Zotty' miniature 029950, boxed 'Jungbar' miniature 031205 and boxed limited edition 'Roly Poly Santa' 01545/5000 with certificate £60 - £80

364

Cotswold Bear Co. - four bagged limited edition bears including 'Huxley' 78/100, 'Hogarth' 91/100, 'Arthur' 26/100 and 'Buster' 7/100 £80 - £120

365

Cotswold Bear Co. - four limited edition bears including 'Ambrose' 21/100, 'Gunther' 1/1, 'Tennessee' 30/100 and 'Pickpocket' 1/1 along with two bags £80 - £120



Lot 366 (part)

366

Cotswold Bear Co. - three bagged limited edition bears including 'Raven' 99/100, 'Cherry' 72/100, 'Waldo' 1/100 and an original prototype 'Leo' inn bag £80 - £120

367 - 368

Spare Lot

369

A collection of 75 Del Prado 'Men At War 1914-1945' lead figures in original packaging (apart from one) with magazines £150 - £250

370 - 399

Spare Lot

400

A large Elkington & Co silver plated wine cistern, the body with embossed grape design and vacant cartouche, h. 24 cm, dia. 45 cm

£600 - £800

401

A George V silver arts and crafts design tea pot with embossed roundels and planished finish. Hallmarked for Birmingham 1926, makers mark for Albert Edward Jones. Approx weight 336g

£140 - £180

402

A George VI silver salver with ball and claw feet. Hallmarked for London 1938, makers mark for The Goldsmiths and Silversmiths Company. Approx weight 366g

£160 - £200



Lot 401



Lot 400

403

A pair of Victorian silver reticulated butter dishes and stands. One dish with goat finial and armorial engraving, the other with a floral finial. Hallmarked for Sheffield 1851-1855, makers mark for Henry Wilkinson & Co. Blue glass liners. Approx silver weight 832g.

£400 - £600



Lot 403

404

An Elizabeth II silver four piece tea and coffee set with Greek key design to rims. Hallmarked for London 1968, makers mark 'M & H'. Approx weight 1768g £700 - £900



Lot 405

405

A George V silver pedestal bowl of octagonal form. Hallmarked for Sheffield 1936, makers mark for Mappin & Webb. Approx weight 777g £300 - £500



Lot xx

Lot 404

406

An Edwardian silver rose bowl with cover. Hallmarked for London 1902, makers mark for Thomas Bradbury & Sons. Approx weight 410g (excluding cover) £200 - £300



Lot 406

410

A George V silver sauce boat together with a silver sugar bowl and a small Elizabeth II silver Guernsey jug. Various hallmarks. Approx weight 416g £160 - £220



Lot 408

407

Three graduating silver candlesticks of openwork design. Hallmarked for Sheffield 1973, makers mark for Jack Spencer. Approx weight 650g £300 - £500



408

A George V silver sugar castor together with an Edwardian silver sugar castor. Various hallmarks. Approx weight 327g £130 - £180

409

A cased set of six eastern white metal niello work napkin rings. Approx weight 117g £45 - £65



Lot 410

411

A Victorian silver sugar bowl and pepper pot together with a white metal tea strainer. Various hallmarks. Approx weight 162g £60 - £80

412

A pair of George V silver double sauce boats. Hallmarked for Sheffield 1918, makers mark for James Dixon & Sons. Approx weight 145g
£80 - £120



Lot 413

413

A William IV silver chamberstick of small proportions. Hallmarked for Birmingham 1832, makers mark for Matthew Boulton. Approx weight 143g
£100 - £150

414

A George V silver twin handled cup or quail together with two small Elizabeth II silver goblets. Various hallmarks. Approx weight 210g
£80 - £120



415

A George V silver cream jug and sugar bowl. Hallmarked for Sheffield 1936, makers mark for Viners Ltd. Approx weight 322g
£120 - £160



416

A Victorian silver mounted crocodile leather cigar case. Hallmarked for London 1884. Makers mark 'E.B.M'
£70 - £100

417

An Elizabeth II silver four piece condiment set. Hallmarked for Birmingham 1974, makers mark for Hampton Utilities. Approx weight 190g
£90 - £140

418

Seven assorted small silver trays. Various hallmarks. Approx weight 286g
£110 - £150



Lot 420



Lot 419

424

An assortment of Georgian and Victorian silver table and dessert forks. Various hallmarks. Approx weight 764g *£300 - £500*

425

An assortment of Georgian and Victorian silver table and dessert forks. Various hallmarks. Approx weight 816g *£300 - £500*

419

A pair of late Victorian silver heart shaped pin trays. Hallmarked for Birmingham 1899, makers mark for A & J Zimmerman Ltd. Approx weight 64g *£30 - £50*

420

Five Elizabeth II silver decanter labels. Hallmarked for Birmingham 1983-1985, makers mark for C Robathan & Son. Approx weight 58g *£60 - £80*

421

A set of ten Victorian silver table spoons with armorial engraving to handles together with one other silver spoon. Various hallmarks. Approx weight 664g *£250 - £350*

422

An assortment of Georgian and later silver dessert spoons. Various hallmarks. Approx weight 782g *£300 - £500*

423

An assortment of Georgian and later silver flatware to include teaspoons, condiment spoons, forks etc. Various hallmarks. Approx weight 614g *£220 - £280*





Jewellery, Coins & Watches

TO BE SOLD BY LIVE AUCTION

Thursday 28th July 2022

Commencing after 1.00pm

Viewing: Saturday prior 10.00am – 2.00pm, Tuesday prior 9.00am – 5.00pm

Wednesday prior 9.00am – 7.00pm, morning of sale from 9am

SALE ENTRIES NOW INVITED



LOCKE & ENGLAND

AUCTIONEERS & VALUERS

Leamington Auction Centre

12 Guy St, Leamington Spa, CV32 4RT

info@leauction.co.uk 01926 889100

www.leauction.co.uk

HAMMER PRICES - MARCH 2022

1	£750	46	£130	159	£160	308	£28	411	£70	516	£140	561	£650
2	£1400	47	£100	160	£1000	309	£260	412	£2600	517	£240	562	£30
3	£320	48	£600	161	£280	310	£280	413	£400	518	£1000	563	£200
4	£140	49	£100	162	£360	312	£200	414	£170	519	£420	564	£80
5	£90	50	£65	163	£260	313	£220	415	£102	520	£320	566	£80
6	£200	51	£60	164	£220	315	£150	416	£90	521	£500	567	£80
7	£30	52	£75	165	£150	317	£4000	417	£70	522	£250	568	£1000
8	£120	54	£380	167	£70	318	£170	418	£45	523	£200	569	£200
9	£130	55	£75	169	£90	319	£180	419	£180	524	£1300	570	£220
10	£30	56	£80	170	£190	320	£120	420	£120	525	£260	571	£250
11	£30	57	£120	172	£80	322	£120	421	£85	526	£460	572	£170
13	£220	58	£260	200	£200	350	£130	422	£70	527	£110	573	£230
14	£100	59	£500	201	£360	351	£60	423	£75	528	£300	574	£180
15	£60	60	£95	202	£40	352	£80	424	£140	529	£200	575	£55
16	£160	61	£110	203	£60	353	£70	425	£60	530	£220	576	£250
17	£110	62	£320	204	£30	354	£100	426	£130	531	£150	577	£360
18	£75	63	£280	205	£75	355	£150	428	£110	532	£150	578	£440
19	£340	64	£80	206	£40	356	£80	429	£70	533	£380	579	£65
20	£120	65	£95	207	£90	357	£50	430	£150	534	£640	580	£35
21	£200	66	£75	208	£300	358	£30	431	£40	535	£230	581	£1800
22	£140	67	£80	209	£150	359	£50	432	£72	536	£70	583	£950
23	£45	68	£60	210	£200	360	£100	433	£70	537	£920	584	£70
24	£100	70	£120	211	£160	362	£70	434	£170	538	£40	585	£600
26	£140	71	£460	212	£75	363	£65	435	£140	539	£700	586	£80
27	£260	72	£60	213	£100	364	£95	436	£140	540	£400	588	£145
28	£50	73	£110	252	£30	365	£80	438	£260	541	£270	589	£160
29	£40	74	£150	253	£20	366	£95	439	£500	542	£50	590	£800
30	£120	75	£140	254	£40	367	£110	440	£190	544	£380	591	£95
31	£75	77	£65	255	£260	368	£160	441	£340	545	£140	592	£150
32	£35	78	£50	257	£28	369	£140	501	£280	546	£55	593	£240
33	£260	79	£320	258	£20	370	£120	502	£2200	547	£240	594	£70
34	£150	80	£45	260	£30	371	£80	503	£220	548	£430	595	£200
35	£160	90	£120	261	£30	400	£80	504	£90	549	£220	596	£380
36	£280	92	£55	262	£20	401	£240	506	£50	550	£340	597	£340
37	£60	93	£100	265	£80	402	£75	507	£190	551	£260	598	£420
38	£130	94	£110	266	£0	403	£170	508	£350	552	£280	599	£160
39	£85	100	£50	267	£30	404	£240	509	£180	553	£80	600	£120
40	£220	101	£70	269	£10	405	£100	510	£90	554	£240	601	£80
41	£460	102	£85	301	£80	406	£550	511	£350	556	£220	602	£60
42	£80	150	£35	303	£200	407	£210	512	£330	557	£75	603	£1250
43	£280	151	£40	304	£50	408	£230	513	£360	558	£500		
44	£75	152	£50	305	£45	409	£340	514	£150	559	£150		
45	£50	153	£70	306	£60	410	£75	515	£220	560	£440		

VALUATION DAY - ENTRIES INVITED

Antique Furniture and Collectors' Items & Jewellery

Tuesday 24th May 2022 - Leamington Spa Auction Centre

SOUTHAMS

Sporting Guns & Antique Arms

The Summer Sales of
Sporting Guns & Antique Arms
9th - 11th June 2022

T: 01234 269 082 E: guns@southamsauction.co.uk

Consignments Invited

www.southamsauction.co.uk

ALL ENQUIRIES

Southams Auctioneers 24 Newnham Street, Bedford, Bedfordshire MK40 3JR

T: +44 (0) 1234 269 082 E: guns@southamsauction.co.uk W: www.southamsauction.co.uk

ENTRIES NOW INVITED

For our next specialist auction of
Antiques and Collectable's at the
Leamington Spa Auction Centre

Recent Highlights



Hammer Price £4,000



Hammer Price £2,200



Hammer Price £1,400

Terms used in this catalogue
have the following meanings.

Please note that all statements in
this catalogue, regarding authorship,
attribution, origin, date, age,
provenance and condition are
statements of opinion and are not
treated as a statement of fact.

1. A N ARTIST

In our opinion, the work is by the
artist.

2. ATTRIBUTED TO A N ARTIST

In our opinion, the work is of the
period of the artist which may be
whole or in part the work of the
artist.

3. STUDIO, (CIRCLE OR WORKSHOP) OF A N ARTIST

In our opinion, the work is of the
period and closely relates to his
style.

4. SCHOOL OF A N ARTIST

In our opinion, the work is by a
pupil or a follower of the artist.

5. MANNER OF A N ARTIST

In our opinion, the work is in the
style of the artist and is of a later
period.

6. AFTER A N ARTIST

In our opinion, this work is a copy
of the artist.

7. ASCRIBED TO A N ARTIST

In our opinion, this work is not
by the artist, however, previous
scholarship has noted this to be a
work by the artist.

8. SIGNED (OR DATED)

The work has a signature (or date)
which in our opinion is genuine.

9. BEARS SIGNATURE (OR DATE)

The work has a signature (or
date) which in our opinion is not
authentic.