



LOCKE & ENGLAND

AUCTIONEERS & VALUERS

JANUARY SALE OF
*Antique Furniture
& Collectors' items*

VIEWING

Antique Furniture & Collectors' items,

Saturday 22nd January – 10am - 2pm

Tuesday 25th January – 9am - 5pm

Wednesday 26th January – 9am - 7pm,

Morning of sale from 9am - 11am

A limited number of people will be permitted in the salerooms at any one time and strict social distancing measures will be in place.

AUCTION

Antique Furniture & Collectors' items,

Thursday 27th January 2022

Commencing at 11.00am

LIVE INTERNET BIDDING



CATALOGUES

£5 by post, online at

www.leauction.co.uk

HAMMER PRICES - NOVEMBER 2021

1	£600	44	£200	161	£150	231	£5500	410	£85	527	£100	571	£450
2	£140	45	£140	162	£70	232	£700	411	£80	528	£180	572	£120
3	£320	46	£70	163	£80	301	£55	412	£750	529	£120	573	£500
4	£100	47	£2800	164	£110	302	£0	413	£50	530	£370	574	£280
5	£300	48	£70	165	£70	303	£120	414	£35	531	£200	575	£300
6	£250	50	£400	166	£24	304	£130	415	£70	532	£20	576	£50
7	£30	51	£120	167	£20	306	£45	416	£45	533	£1800	578	£320
8	£160	52	£100	168	£28	307	£220	417	£220	535	£100	579	£130
9	£260	53	£320	169	£30	308	£200	418	£140	536	£300	580	£60
10	£140	55	£70	170	£750	309	£200	419	£80	537	£170	581	£150
11	£150	56	£55	171	£240	310	£190	420	£150	538	£300	582	£400
13	£240	57	£360	200	£320	311	£75	421	£120	539	£200	583	£380
14	£100	58	£130	201	£85	312	£80	422	£210	540	£180	584	£140
15	£45	59	£300	202	£50	313	£60	423	£240	541	£170	586	£400
16	£1300	60	£100	203	£80	314	£100	500	£300	542	£140	588	£80
17	£95	61	£30	204	£160	315	£120	501	£250	543	£290	589	£150
18	£190	62	£60	205	£100	316	£110	502	£240	544	£55	590	£60
19	£55	63	£30	206	£110	317	£40	503	£190	545	£75	591	£220
20	£150	64	£35	207	£100	318	£45	504	£260	546	£140	592	£140
21	£300	65	£140	208	£80	319	£460	505	£300	547	£860	593	£400
22	£180	66	£420	209	£60	321	£260	506	£460	548	£300	594	£160
23	£100	80	£100	210	£24	322	£240	507	£240	549	£240	595	£240
24	£50	81	£100	211	£85	323	£50	508	£75	550	£150	596	£220
25	£320	82	£110	212	£75	324	£30	509	£100	551	£220	597	£200
26	£190	83	£110	213	£80	326	£70	510	£160	552	£240	598	£200
27	£60	84	£100	214	£75	327	£240	511	£100	553	£670		
28	£240	85	£300	215	£95	328	£150	512	£90	554	£260		
29	£40	86	£160	216	£80	329	£90	513	£400	555	£220		
31	£50	87	£55	217	£100	330	£85	514	£230	556	£140		
32	£70	88	£220	218	£60	331	£160	515	£290	557	£670		
33	£300	89	£140	219	£110	332	£160	516	£190	558	£75		
34	£150	150	£200	220	£120	400	£2230	517	£400	559	£320		
35	£240	151	£280	221	£90	401	£220	518	£250	560	£90		
36	£300	152	£20	222	£40	402	£220	519	£280	561	£200		
37	£200	153	£35	223	£40	403	£260	520	£320	562	£50		
38	£50	155	£160	224	£100	404	£510	521	£420	563	£140		
39	£80	156	£140	225	£35	405	£180	522	£280	564	£200		
40	£70	157	£200	226	£50	406	£190	523	£250	565	£150		
41	£480	158	£300	227	£85	407	£60	524	£240	566	£950		
42	£160	159	£50	228	£60	408	£150	525	£60	568	£45		
43	£50	160	£20	229	£55	409	£80	526	£260	570	£280		

VALUATION DAY - ENTRIES INVITED

Antique Furniture and Collectors' Items & Jewellery

Wednesday 23rd February 2022 - Leamington Spa Auction Centre

*Furniture
and Clocks*



Furniture and Clocks

1

An early 18th century oak duodarn converted to a tri-darn later that century, the top over open storage and cupboard door with initials and carved date '1706' above two further cupboard doors, h. 188 cm, w. 135 cm, d. 53 cm *£300 - £500*

2

An 18th century oak mule chest, the lift up cleated top revealing a vacant interior over three drawers on bracket feet, h. 66 cm, w. 107 cm, d. 51 cm *£100 - £150*



Lot 2

3

A Victorian carved oak serving table, the top with lion mask back over two drawers on barley twist front legs, h. 104 cm, w. 153 cm, d. 61 cm *£100 - £150*



4

A late 17th century oak coffer of small proportions, the three panel top over the lunette carved and two panel front, h. 46 cm, w. 83 cm, d. 47 cm *£150 - £250*

Lot 1

5

A late 18th century oak chest of two short over three long drawers on bracket feet, h. 96 cm, w. 93 cm, d. 49 cm *£80 - £120*

6

An early 20th century chip carved chest, the top revealing a vacant interior on shaped plinth base, h. 34 cm, w. 89 cm, d. 35 *£50 - £80*



Lot 7

7

A 19th century ash Windsor chair, the hoop back with pierced splat over the shaped seat on turned legs and stretchers, h. 101 cm, w. 60 cm, d. 63 cm *£120 - £180*

8

An 18th century oak tilt top tripod table, the circular top on a turned column and three legs, h. 70 cm, dia. 68 cm *£50 - £80*

9

A 19th century scumbled open armchair on sabre legs, h. 84 cm, w. 63 cm, d. 85 cm *£100 - £200*

10

A handwoven Caucasian rug, the main border with geometric design surrounding the red ground field, 120 cm x 86 cm *£40 - £60*



Lot 11

11

An early 20th century oak sectional bookcase comprising of five glazed bookcase sections, plinth and cornice, 185 cm, w. 128 cm, d. 36 cm *£200 - £300*

12

A reproduction 18th century style oak dresser, the plate rack with two cupboards over the base with four drawers and ogee top raised field panel doors, h. 184 cm, w. 152 cm, d. 49 cm *£200 - £300*

13

An early 18th century oak coffer, the four panel top over the three panel front, h. 69 cm, w. 135 cm, d. 58 cm *£100 - £150*

14

An early 18th century oak wall hanging corner cupboard, the single field panel door enclosing three shaped shelves, h. 102 cm, w. 69 cm

£40 - £60

15

A 19th century mahogany and banded bow front chest of two short over three long drawers on turned feet, h. 109 cm, w. 105 cm, d. 55 cm

£100 - £150

16

An early 19th century rosewood tea table, the fold over top supported on a swivel action on a tapering octagonal column, platform base and four C-scroll legs, h. 75 cm, w. 91 cm, d. 45 cm

£100 - £150

17

An Edwardian walnut music cabinet, the top over two doors with floral carved panels on burr walnut stand, h. 97 cm, w. 44 cm, d. 44 cm

£150 - £250

18

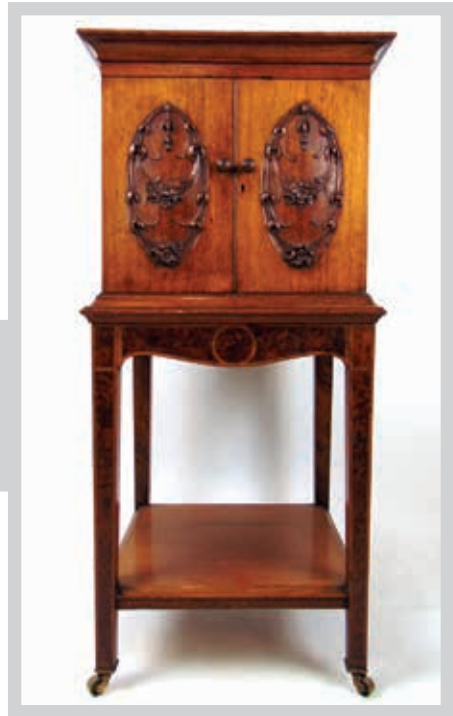
A pair of Regency mahogany, rosewood banded, parquetry and strung card tables, the top supported on a double gate action with later baize inserts on sabre legs, h. 74 cm, w. 92 cm, d. 45 cm

£500 - £800

19

A handwoven Turkish rug, the multi line border surrounding the red ground field with superimposed medallions, 265 cm x 139 cm

£100 - £150



Lot 18

20

An early 20th century carved teak Kashmir bureau with Chinese influence, the fall front with deeply carved dragon enclosing a fitted interior over six drawers, bearing paper label to back 'No. 52 made by Jubbah Kahn and son. State wood carvers and Papier machie makers. 3rd Bridge, Srinagar, Kashmir, h. 125 cm, w. 97 cm, d. 50 cm

£200 - £300



Lot 20



Lot 21

21

An early 20th century carved teak arm chair attributed to Jubbar Kahn and son of Kashmir, the dragon top rail over the panel back and lift up seat, h. 102 cm, w. 50 cm, d. 70 cm

£100 - £200

22

An 18th century mahogany secretaire chest of drawers, the top over the secretaire drawer with a fitted interior and three long drawers on squat bun feet, h. 109 cm, w. 115 cm, d. 59 cm

£200 - £300



Lot 22

23

An early 20th century Regency style mahogany sofa upholstered in a rose gold floral fabric with reeded show frame on turned and reeded legs, h. 93 cm, l. 168 cm, d. 77 cm

£150 - £250

Lot xx

24

An early 19th century mahogany and strung chest of two short over three long drawers with shaped apron on splay feet, h. 120 cm, w. 122 cm, d. 56 cm *£100 - £200*

25

A 19th century French mahogany armoire, the carved cornice over a single bevelled mirror door, flanked by bevelled plates over carved panels on carved cabriole legs, the interior with hanging rail and drawers below. h. 271 cm, w. 177 cm, d. 55 cm *£300 - £500*

Lot 25



Lot 24

26

An Edwardian rosewood card table, the fold over top supported on a swivel action on turned, fluted and reeded legs joined by pierced stretchers, made by T Simpson & Sons of Halifax, h. 73 cm, w. 91 cm d. 47 cm *£100 - £200*



Lot 26

27

A handwoven Persian rug, the triple line border surrounding a red ground field, 100 cm x 57 cm *£40 - £60*

28

An early 19th century mahogany pembroke table, the drop leaf top over a single drawer on a turned column and four moulded splay legs, h. 72 cm, max w. 116 cm, d. 101 cm

£70 - £100



Lot 28

29

An 18th century mahogany and inlaid demi-lune tea table, the fold over top supported on a double gate action on four square section tapering legs, h. 72 cm, dia. 91 cm

£100 - £150

30

A 19th century French walnut, marquetry and brass mounted display cabinet, the top over a single glazed door enclosing a lined interior on a shaped plinth base, h. 103 cm, w. 78 cm, d. 31 cm

£80 - £120

**31**

A 19th century French burl walnut, marquetry and brass mounted single drawer side table, the shaped top over single drawer on cabriole legs, h. 74 cm, w. 75 cm, d. 44 cm

£150 - £250



Lot 32

32

A handwoven Afghan runner, the multi line border surrounding a red ground field, 261 cm x 85 cm

£70 - £100



Lot 33

33

A reproduction mahogany secretaire bookcase in the late 18th century style, the dental cornice over two astragal glazed door above the secretaire drawer with fitted interior and three long drawers, h. 206 cm, w. 92 cm, d. 46 cm

£200 - £300

34

A 19th century grained pipe rack, the glazed door over sloped lid and drawer, h. 63 cm, w. 33 cm, d. 20 cm

£100 - £150

35

An early 20th century quartetto nest of tables, the tops painted with images of couples and landscapes on turned legs,

h. 71 cm, w. 58 cm, d. 42 cm

£80 - £120

36

A late 18th century mahogany, banded and strung demi lune card table, the fold over top supported on a double gate action on turned legs, h. 74 cm, w. 91 cm, d. 44 cm

£50 - £80



37

A set of six early 19th century mahogany dining chairs, the top rail over the carved back rail and upholstered pad seat on turned and carved front legs, h. 84 cm, w. 46 cm, d. 52 cm

£80 - £120

38

An 18th century mahogany tea table, the moulded top supported on a single gate action over a single end drawer on moulded tapering legs, h. 73 cm, w. 91 cm, d. 45 cm £70 - £100

39

An early 20th century mahogany serpentine front side board in the 18th century style, the top over central drawer and tambour cupboard flanked by drawers and a cupboard on square tapering supports, h. 110 cm, l. 198 cm, d. 70 cm
£60 - £100

40

A Victorian burr walnut and strung work table, the lift up top revealing a fitted interior over the work basket on turned column and four carved scroll legs, h. 71 cm, w. 51 cm d. 41 cm
£80 - £120

41

A handwoven Persian rug, the multi line border surrounding the red ground field with three superimposed medallions, 274 cm x 151 cm
£100 - £150

42

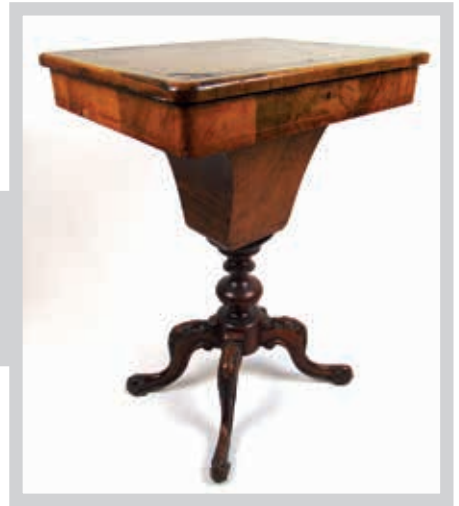
A late Victorian burr walnut davenport, the galleried top over the slope with green tooled leather insert above four side drawers with dummies verso supported on carved scroll supports, h. 87 cm, w. 52 cm, d. 54 cm
£200 - £300



Lot 42 and 41

43

A Regency style mahogany dining table, the reeded edged top with one extra leaf on turned columns and reeded splay legs, h. 77 cm, max l. 212 cm, w. 115 cm £150 - £250



44

A Victorian mahogany chaise longue upholstered in a cut green fabric, the moulded and carved show frame on turned and gadrooned feet, h. 94 cm, l. 194 cm d. 64 cm
£100 - £200



45

An 18th century and later mahogany tilt top tripod table, the circular top on a turned column and three splay legs, h. 71 cm, dia. 74 cm £40 - £60

46

An early 20th century mahogany desk, the top with a brown leatherette insert over a row of three drawers and two three drawer pedestals on plinth base, h. 78 cm, w. 153 cm, d. 92 cm £200 - £300

47

An 18th century mahogany tea table, the fold over top supported on a single gate action on chamfered square section legs, h. 73 cm, w. 91 cm, d. 45 cm £80 - £120

48

An early 20th century oak sectional bookcase by Lebus, comprising of four glazed bookcase sections, cornice and plinth, h. 163 cm, w. 88 cm, d. 36 cm £150 - £250

49

A handwoven Persian rug, the multi line border with herati design surrounding the blue ground field with floral motif's, 297 cm x 192 cm £100 - £200



Lot 49

50

An early 19th century mahogany chest of two short over three long drawers on splay feet, h. 103 cm, w. 106 cm, d. 46 cm £80 - £120

51

An early 20th century mahogany and parcel gilt desk, the top with a green tooled leather insert to top over a bow central drawer on two three drawer pedestals, 73 cm, w. 129 cm, d. 72 cm £100 - £200

52

An Edwardian mahogany, satinwood banded and marquetry revolving bookcase, the serpentine top over shelves, h. 85 cm, w. 49 cm, d. 49 cm £80 - £120

53

A pair of reproduction walnut and beech open arm chairs upholstered in a striped floral silk fabric, 120 cm, w. 68 cm, d. 86 cm £100 - £200

54

An early 19th century mahogany chest of two short over three long drawers with turned knobs on bun feet, h. 105 cm, w. 106 cm, d. 52 cm £80 - £120



Lot 51

55

An Edwardian walnut, boxwood strung and marquetry games/work table, the top with inlaid satinwood and rosewood chess board swiveling to fold out games table over a fitted interior above work box on four scroll legs, h. 74 cm, w. 54 cm, d. 42 cm *£80 - £120*



56

A handwoven Caucasian rug, the multi line border surrounding a cream ground field with octagon and crab motif's, 303 cm x 224 cm *£100 - £200*



Lot 57

57

An early 20th century Eastern elm and brass mounted table cabinet, the two doors enclosing a bank of six drawers with carry handles to sides, h. 44 cm, w. 62 cm,, d. 37 cm *£80 - £120*

58

An early 19th century mahogany mirror back sideboard, the mirrored back over a central drawer flanked by drawers over cupboard doors on plinth base, h. 136 cm, l. 214 cm, d. 67 cm *£80 - £120*



Lot 59

59

An early 20th century Art Deco lead water feature in the form of a seated nude lady holding a bowl, h. 74 cm *£100 - £200*

60

An 18th century oak single drawer side table, the moulded top over the drawer with shaped frieze on cabriole legs, h. 72 cm, w. 83 cm, d. 47 cm *£120 - £180*



Lot 61

61

A late 17th century oak miniature six plank coffer with initials M & O carved to front, h. 33 cm, w. 57 cm, d. 24 cm *£200 - £300*



Lot 62

66

A 19th century carved oak four fold screen with cane surrounding a carved armorial crest over embossed poly chrome leather panels, h. 182 cm, w. 240 cm

£100 - £200

67

An early 19th century elm, beech and fruitwood Windsor chair, the hoop back over shaped seat on turned legs and stretchers, h. 104 cm, w. 62 cm, d. 63 cm

£80 - £120

62

A 19th century and later Gothic oak bench, the later slatted back over the solid seat on stop chamfered legs and wishbone stretchers, h. 76 cm, l. 112 cm, d. 36 cm

£70 - £100

63

A late 17th / early 18th century oak bible box, the top lifting to reveal a vacant interior over lunette carved front and sides, h. 16 cm, w. 55 cm, d. 30 cm

£80 - £120

64

An 18th century and later carved oak bureau, the brass mounted fall front revealing a fitted interior over two short and three long drawers, 94 cm, w. 101 cm, d. 54 cm

£40 - £60

65

An early 18th century and later walnut and banded chest of four long graduating drawers, the later top over later brushing slide on bracket feet, h. 75 cm, w. 74 cm, d. 45 cm

£200 - £300

68

A late 17th century and later oak side table, the later top over a nulled frieze on turned front legs, h. 70 cm, w. 129 cm, w. 68 cm

£80 - £120

69

An 18th century oak and mahogany banded close stool of octagonal form with brass carry handles on bracket feet, h. 52 cm, dia. 43 cm

£80 - £120



Lot 65



Lot 70

70

A handwoven Persian rug, the multi line border surrounding a cream ground field with arabesque motif's, 221 cm x 144 cm
£200 - £300

71

A late Victorian burr walnut, boxwood strung and marquetry breakfast table, the oval tilt top on a four column base with four C-scroll carved legs, h. 71 cm, w. 128 cm, d. 96 cm
£80 - £120

72

An early 18th century possibly red walnut bureau, the fall front revealing a fitted interior with well, over two short and two long drawers on bracket feet, h. 103 cm, w. 94 cm, d. 57 cm
£100 - £150

73

An 18th century oak and pine plate rack, the cornice over nulled entablature and open shelves, h. 132 cm, w. 162 cm
£50 - £80



Lot 74

74

A 19th century and later walnut armchair upholstered in a green button back upholstery on later turned legs, h. 97 cm, w. 66 cm, d. 64 cm
£70 - £100



Lot 72

75

A late Victorian mahogany chaise lounge upholstered in a cut green fabric, the baluster back on turned and carved feet, h. 72 cm, l. 179 cm, d. 72 cm £80 - £120



76

A late 19th century walnut sideboard by Gillows of Lancaster, the beveled mirrored back over three drawers open storage and glazed cupboards, stamped to drawer, h. 187 cm, w. 168 cm, d. 40 cm £300 - £500

77

A handwoven Caucasian rug, the main border with serrated leaf motif surrounding a brown ground field 226 cm x 143 cm £50 - £80

100

An early 20th century French oval brass cased five beveled glass carriage time piece, the enameled face with Roman numerals, h. 12 cm £80 - £120

101

A brass cased five beveled glass carriage alarm clock striking on a bell, the enameled face with Roman numerals over the alarm dial, h. 13.5 cm (excluding handle) £200 - £300



Lot 101

102

An early 20th century brass cased five beveled glass repeater carriage clock striking on a gong, the enameled face with Roman and Arabic numerals, signed R & W Sorley, Paris, h. 13 cm (excluding handle) £200 - £300

103

An Arts and Crafts ebonized oak drop dial wall clock in the manner of Gustav Stickley, h. 78 cm £50 - £80



Lot 103

104

A 19th century mahogany banjo barometer, the dry/damp dial over a thermometer, silvered weather dial and spirit level, signed C. Rimondi of Halifax, h. 99 cm, w. 26 cm £60 - £100

105 - 149

Spare Lots

Pictures & Maps



Pictures and Maps

150

Raphael Kirchner 1876-1917

A study of a lady

unsigned, provenance to back

pencil and watercolour

27 cm x 37 cm

£100 - £200

151

18th century Continental school

Mary, Jesus and John

unsigned

oil on canvas

24 cm x 29 cm

£80 - £120

152

Walter Linsley Meegan

(British 1859-1944)

river through mountains

signed W. Linsley,

dated 1912

oil on canvas

45 cm x 30 cm

£100 - £200

153

English school early 20th century

lake scenes (2)

unsigned

oil on board

28 cm x 15 cm (image only, each) £50 - £80



154

Arthur Wardle (British 1864-1949)

terrier on doorstep

signed and dated 1908

watercolour

28 cm x 34 cm (image only)

£300 - £500

155

Ascribed to Arthur Wardle (British 1864-1949)

girl on horse back with three dogs

bears signature

oil on canvas

63 cm x 53 cm

£200 - £300

156

Arthur Wardle (British 1864-1949)

'Home On Leave'

signed

oil on canvas

80 cm x 64.5 cm

£5000 - £8000



Lot 150



Lot 155



Lot 156



Lot 157

158

Attributed to Percy Tarrant
(British 1855-1934) carol singers
unsigned
oil on canvas
33.5 cm x 44 cm £300 - £500

159

Attributed to Edward William
Cooke
(British 1811-1880)
fishermen and boats on coast
unsigned - label to back stating
the painting is signed to back
oil on board
51 cm x 23.5 cm £200 - £300

157

Attributed to Paul Jones
(British, active 1855-1888)
horse and dogs in yard
indistinctly
signed
oil on canvass 39 cm x 29 cm £400 - £600

160

Todd White (American b. 1969)
lady with outstretched arm
signed limited edition print
70/125 80 cm x 42 cm £150 - £250



Lot 158

161

19th century Greek school
icon of a saint
oil on board
6.5 cm x 8 cm £50 - £80

162

Thomas Gainsborough (1727-1788)
cattle in woodland and huntsmen in
woodland soft ground etching and aquatint
(along with an etching of cattle by pond)
'The Rowley Gallery, label verso (3 pieces)
larger aquatint
35 cm x 28 cm £100 - £200

163

A late 18th/early 19th century sampler
by Emma Deaville aged eight with animal
and floral motif's and the verse:- Jesus
permit thy gracious name to stand As the
first effort of a females hand And whilst
my fingers on the canvas move Engage
my heart to seek thy love With thy dear
children let me have a part And write thy
saving name upon my heart 44 cm x
48 cm £100 - £200



Lot 159

164

Renoir 19th century
continental school
George III in shawl and armour
oil on ivory in Boule frame
signed
13 cm x 17 cm

£80 - £120

165 - 169

Spare Lots

170

Johann Baptist Homann (1664-1724 (?))
Aegyptus Hodierna (Egypt)
hand coloured engraving, first published 1720
along with 'Natolia quae olim Asia Minor' after
Pierre Mariette and 'Mapa De Siria' after D.
Thomas Mauricio Lopez Egypt map 52 cm x
61 cm

£100 - £200



Lot 164



Lot 160

171

An early 19th century map of France mounted on cloth 'Carte Itineraire De La France' 1833
56 cm x 59 cm £50 - £80



172

Map of Africa, laid down partly from the observations of the Royal Academy of Sciences and partly from the improvements of Herman Moll geographer and compared with the maps of Sanson, Nolin, Du Fer, De Lisle and other modern geographers. Printed for the Carrington Bowles, map and print seller at No.69 in St. Pauls Church Yard London undated, probably early 18th century laid on hessian 121 cm x 100 cm £200 - £300

173

An early 19th century ordinance map office map of Warwickshire, and Worcestershire in slip case along with a three sheet general chart of the Mediterranean Sea, 1839 in slip case and a treaty series, 1920 agreement between the United Kingdom and Belgium respecting Boundaries in East Africa in case. £80 - £120

174

Jan Barend Elwe (Dutch, fl. 1777-1815)
Les Isles Britanniques 1792
61 cm x 48 cm £80 - £120

175

After John Ogilby (British 1600-1676) 'The Road from London to Shrewsbury' and 'The Continuation of the Road from London to Holyhead' hand coloured engravings (2) 45 cm x 35 cm £50 - £80

176

after Christopher Saxton and William Kip
Warwici Comitatus a Cornauus Olim Inhabitus
Warwickshire hand coloured engraving 40 cm x 33.5 cm £50 - £80

177 - 199

Spare Lots



Lot 176

*Ceramics & Glass,
Works of Art*



Ceramics, Glass and Works of Art

200

A large 19th century Chinese Famille Rose charger decorated with court scenes within a border of flowers, butterflies and auspicious objects, dia. 41.5 cm
£150 - £250

201

A 19th century Chinese Famille Rose medallion bowl decorated with figures and flowers, together with one other decorated with birds, butterflies and flowers, max dia. 31 cm
£100 - £200

202

A 19th century Chinese Famille Rose bowl decorated with an interior scene within a floral border, dia. 32 cm
£100 - £200



Lot 203

203

A large 19th century Chinese Famille Rose medallion punch bowl decorated with interior scenes and flowers, dia. 27.5 cm
£150 - £250

204

A large 19th century Chinese Famille Rose punch bowl decorated with interior scenes and flowers, dia. 27.5 cm A/F
£70 - £100

205

A late 19th/early 20th century Royal Crown Derby thirty seven piece dinner service decorated in a pink and yellow carnation pattern
£100 - £200



Lot 202

206

A pair of 20th century continental Augustus Rex style baluster vases decorated with flowers and scenes of couples, h. 32 cm
£60 - £80

207

A Walter Moorcroft baluster vase decorated in the anemone pattern on a dark blue ground, h. 20 cm
£70 - £100



Lot 200

208

A Walter Moorcroft plate decorated in the Columbine pattern on a wood smoke ground, dia. 21.5 cm *£40 - £60*



209

A large Beswick model of a seated fox. h. 31 cm *£80 - £120*



Lot 210

210

A Troika chimney vase decorated by Alison Brigden, h. 15 cm *£100 - £150*

211

A pair of 20th century Chinese ceramic vases of square baluster form. The bodies decorated with garden scenes and exotic birds, four character marks to bases, h. 45 cm *£80 - £120*

212 - 299

Spare lots

300

An early 20th century 'Birmingham Athletic Institute' women's department advertising board, h. 122 cm, w. 176 cm *£100 - £150*



Lot 301

301

An early 20th century bronze bust of an Eastern gentleman on ebonized plinth with presentation plaque, h. 64 cm *£300 - £500*



302

A late 19th/early 20th century Chinese bronze censer having a foo dog finial, the body with relief cast handles in the form of dragons, h. 33 cm

£200 - £300

303

A 19th century Chinese bronze censer, the body decorated in relief with scenes of birds and mythical beasts, the handles modelled in the form of elephant heads. The cover having a pierced cloud design, h.21 cm

£300 - £500



Lot 303



Lot 304

304

In the manner of Franz Bergmann, an early 20th century cold painted bronze model of a eastern man with a rug, h. 6.5cm

£80 - £120

305

In the manner of Franz Bergmann, an early 20th century cold painted bronze model of a eastern trader on a rug, h. 5cm

£100 - £150



Lot 305

306

A C. Wheatstone & Co concertina having fretwork end panels with forty nine buttons. Numbered '33010'. Accompanied by original leather carry case.

£600 - £800



Lot 306



Lot 307

307

An early 20th century English made concertina, the fretwork end panels with thirty one buttons. Accompanied by wooden case £200 - £300

308

An early 20th century enamel street sign 'Leycester Place', 1.98 cm £60 - £80

309

A scratch built 2 1/2 inch gauge live steam locomotive with tender, l. 72 cm £150 - £250

310

A mid-20th century autograph book containing a large quantity of signatures to include The Rolling Stones, Cliff Richard, Jet Harris, Dusty Springfield, Roger Daltrey etc. £300 - £500



311

The Beatles, fan club released flexidisc Christmas Records 1963 & 1965 £100 - £200

312

A framed and glazed photograph of Fred Astaire with sperate signature 'sincerely Fred Astaire', 32 cm x 51 cm £30 - £50

313

'Snaffles' (C Johnson Payne), More Bandobast. 1st Edition, Published by Collins, 48 Pall Mall, London, 1936 £40 - £60

Lot 309





Lot 314

314

A pair of Robert 'Mouseman' Thompson of Kilburn bookends, the adzed surface with carved mice, h. 15.25 cm *£200 - £300*

315

A Robert 'Mouseman' Thompson of Kilburn oak chopping/cheese board with carved mouse to handle, 39 cm x 20.5 cm *£100 - £150*



Lot 315

Lot 320



316

A Robert 'Mouseman' Thompson of Kilburn oak octagonal chopping/cheese board with carved mouse to side, 30 cm x 25 cm *£100 - £150*

317

A 0 gauge electric tin plate locomotive 'LMS 1056' in black livery along with two passenger coaches, six goods wagons and accessories many in original boxes *£100 - £200*



Lot 316

318

A collection of antiquarian and later leather bound books, including Irving's 'Life Of Columbus', Green's 'History Of The English People', Shenstone's Works, Holy Bible etc. *£100 - £200*

319

An early 20th century oak cased 'Four Ball Machine', made by Handan-Ni Ltd. Patent No. 15468/13, h. 90 cm *£300 - £500*

320

A boxed pair of Mont Blanc ballpoint pens *£100 - £200*



Lot 319

321

A 19th century Belgian double barrelled percussion pistol, l. 24 cm A/F £70 - £100



Lot 322

322

An early 20th century Japanese Kiseruzutsu and Tabako-ire (pipe case and tobacco pouch) suspended from a netsuke with bronze panels with Japanese script £80 - £120

323

A late 19th century Chinese bronze foo dog incense burner with turquoise eyes, h. 16 cm £50 - £80

324

A 19th century Chinese bronze censer, the body and pierced lid depicting four claw dragons amidst clouds. Six character mark to base, h. 18.5 cm

£250 - £350



Lot 324

Lot 318 (part)





Lot 328 (part)

325

A Japanese patinated bronze vase inlaid with gold and silver coloured metals and with an oval relief panel depicting flowers, signed to base, h. 18 cm

£100 - £200

326

A late 19th century brass easel photograph frame by J.G. Hayward of Derby, the pierced and engraved frame with an oval onyx door having a hard stone relief of rose and flowers opening to reveal two photograph niches, h. 28 cm

£100 - £200

327

Terrific comics - No's 1-43 complete, form the 1960's (no gifts)

£50 - £80

328

Complete set of 'Fantastic' comics no's 1-89 1960's, with free gift in issues 1 and 53

£200 - £300

329 - 399

Spare Lots



Lot 326

*Silver & Plate
and Coins*



Silver & Plate

400

A silver plated presentation desk stand with glass dome and stand. Inscribed 'Presented To James Anderson Esq From The Children Attending New Elgin Children's Church Nov 28th 1882' Makers mark for James Deakin & Sons, Sheffield, h. 24 cm *£150 - £250*



Lot 400



Lot 401

401

A pair of Edwardian silver Corinthian column candlesticks with stepped bases. Hallmarked for Sheffield 1907, makers mark for Hawksworth, Eyre & Co. Ltd, h. 15.5 cm *£140 - £180*

402

A pair of Elizabeth II silver candlesticks. Hallmarked for Birmingham 1976, makers mark for WJ Broadway & Co, h.18 cm *£50 - £80*

403

An Edwardian silver pierced bowl on fish supports together with an Edwardian silver jug of neoclassical design and a late Victorian silver sauce boat. Various hallmarks. Approx weight 311g *£150 - £200*



Lot 405

404

An Elizabeth II silver engine turned cigarette box together with a silver topped and glass bodied table match striker. Various hallmarks *£50 - £80*

405

A George V silver cigarette case of curved form. Hallmarked for Chester 1923. Approx weight 156g *£60 - £80*



Lot 406

406

A George VI silver cigarette case having engine turned decoration. Hallmarked for Birmingham 1940, makers mark for Joseph Gloster Ltd. Approx weight 141g *£50 - £80*

407

A cased thirteen piece George V silver kings pattern teaspoon and sugar tong set. Hallmarked for London 1929, makers mark for The Goldsmiths and Silversmiths company Ltd. Approx weight 213g *£80 - £120*

**Lot 408****408**

A George V silver trinket or jewellery box. Hallmarked for Birmingham 1920, makers mark for Robert Pringle & Sons, h. 3.5 cm *£50 - £80*

409

A collection of silver and white metal topped dressing table and perfume bottles. Various hallmarks. *£70 - £100*

410

An assortment of Georgian and later silver tea and coffee spoons. Various hallmarks. Approx weight 362g *£130 - £180*

411

A Victorian silver card case having engraved scrolling and floral motifs and a vacant cartouche. Hallmarked for Birmingham 1863, makers mark possibly Hilliard & Thomason. Approx weight 54g, 7 cm x 9.5 cm *£80 - £120*

**Lot 411****412**

A Victorian silver card case having a pattern of engraved floral motifs and vacant cartouches. Hallmarked for Birmingham 1858, makers mark for Aston & Son. Approx weight 68g, 7 cm x 9.5 cm *£80 - £120*

**Lot 417****413**

A pair of Victorian silver serving spoons with gilt bowls, twisted stems and figural finials together with a Georgian and later silver berry spoon. Various hallmarks. Approx weight 235g *£100 - £150*

**Lot 414****414**

A George V silver snuff box. Hallmarked for Birmingham 1929, makers mark for Deakin & Francis Ltd. Approx weight 65g *£50 - £80*

415

A silver collared cut glass bottle together with a silver topped dressing table pot and two silver trinket/jewellery boxes. Various hallmarks, h.16 cm. *£60 - £80*

416

Two silver vesta cases together with two modern silver pill boxes and one white metal pill box. Various hallmarks *£60 - £80*

**Lot 412****417**

A cased pair of Edwardian silver scallop salts. Hallmarked for Chester 1902, makers mark for James Deakin & Sons. Approx weight 20g *£30 - £40*



Lot 419

418

An assortment of silver flatware to include Georgian serving spoons, fish slices, salts spoons, cased set of teaspoons etc. Various hallmarks. Approx silver weight 466g
£170 - £200

419

A profusely engraved eastern white metal serving tray. Approx weight 1295g 39 cm x 28 cm £400 - £600

420

An eastern white metal covered glass bottle having pierced and engraved scenes of birds amidst foliage, h. 23.5 cm
£100 - £200



Lot 420



Lot 421

421

An early 20th century Chinese white metal cigarette case decorated in relief with a dragon. Marks to interior. Approx weight 146g
£120 - £180

422

An eastern white metal serving spoon having engraved stem with embossed Buddha to top, together with a set of white metal teaspoons marked '800'. Approx weight 126g £40 - £60



Lot 424

424

A Jubilee Mint '85th Anniversary Of The Year Of The Three Kings' 2021 gold proof sovereign

£250 - £350

425

A Jubilee Mint 2021 Remembrance Day gold proof sovereign

£250 - £350

426

A '200 Years of Monarchs of the British Empire' 999 gold coin set

£120 - £180

427

A Beautiful Africa 999 gold coin set

£40 - £60

428

A silver hallmarked footed bowl, Chester 1938, dia. 22.5 cm, approx weight 443g

£180 - £220

429

A silver hallmarked three footed salver, Sheffield 1993, dia. 25 cm, approx weight 558g

£200 - £250

430

A silver hallmarked three footed salver with shaped edge and engraved 'D' to centre, London 1775, dia. 18.5, approx. weight 315g

£110 - £140

431

A silver hallmarked footed presentation bowl for the 'Annual Bridge Competition', Birmingham 1968, dia. 20 cm, approx. weight 552g

£200 - £250



Lot 431

432

A silver hallmarked hip flask, London 1927, makers mark for S. Mordan and co, lockable twist top, h. 16 cm, approx. weight 290g

£150 - £200



Lot 429

433

Two silver hallmarked photograph frames, Sheffield 1977 and 1998, largest h. 21 cm
£40 - £60

434

A silver hallmarked presentation cigarette box, Birmingham 1975, engraved plaque to front, h. 7 cm, w. 20.5 cm, d. 10.5
£60 - £80

435

Two silver hallmarked toast racks, Sheffield 1938 and London 1937, approx. weight 159g
£55 - £75



Lot 435

436

A silver hallmarked hip flask, Sheffield 2001, makers mark for Carr's of Sheffield Ltd. screw top, h. 11.25cm, approx. weight 138g
£60 - £80

437

A pair of cased silver hallmarked salts in the form of scallop shells, Birmingham 1897, along with two unrelated spoons, approx. weight 38g
£30 - £50

438

A Georgian silver hallmarked engraved tea pot with ebony handle and finial, London 1798, makers mark for Solomon Hougham, h. 17 cm, approx. weight 523g
£200 - £250

439

A Georgian silver hallmarked tea pot, London, maker mark I.C., h. 12.5 m, approx. weight 486g
£170 - £220

440

A silver hallmarked goblet, Birmingham 1951, makers mark B & Co., h. 15.5 cm, approx weight 145g
£50 - £80



Lot 438

441

A gilt silver hallmarked limited edition 'The Royal Scallop Dish' stamped 13 to base, to commemorate the birth and christening of Prince William of Wales by Hector Miller for Aurum. The dish surmounted by two cherubs, one holding a crown the other a trumpet, h. 8 cm, approx. weight 172g
£100 - £150

**442**

A silver hallmarked scent bottle, London 1888, h. 5.75 cm, approx. weight 22g
£20 - £30



Lot 442

443

A Chinese white metal pepperette in the form of a pagoda, marks to base, h. 9.5 cm, approx. weight 40.5g
£50 - £80



Lot 448

444

A white metal propelling pencil stamped S. Mordan & Co., l. 9.5 cm, approx. weight 16.9g
£30 - £40



Lot 445

445

A silver hallmarked capstan inkwell, Birmingham 1909, dia 14.25 cm, weighted base
£50 - £80



446

A silver hallmarked three branch candelabra, Birmingham 1973, makers mark for Albert Edward Jones, h. 26.5 cm, weighted base
£70 - £100

Lot 443

447

A silver hallmarked serving spoon, London 1875, along with a ladle marked 800, total approx. weight 275g
£80 - £100

448

Five assorted silver hallmarked decanter labels, Sherry, Scotch, Rum Gin and Vodka, all marked Birmingham 2005 or 2006, makers mark for C. Robatham & Son, approx. weight 46g
£20 - £30

449

A silver hallmarked card tray with a shaped scalloped edge, Birmingham 1977, makers mark 'S&M', dia. 20.5, approx. weight 261g
£100 - £130



Lot 449

450

Eighteen silver hallmarked napkin rings including two cased, various marks, approx weight 400g £160 - £200

451

Two cased sets of silver hallmarked tea spoons, the set of twelve - Sheffield 1941 by Angora silver plate Co., the set of six with sugar tongs - London 1924, approx weight 177g £65 - £85

452

Two silver hallmarked vesta cases, Birmingham 1904 and 1905, approx weight 65g £30 - £50

453

An Elgin American cigarette case- lighter combination marked sterling, with case, pouch and lighter instructions, approx weight 179g £70 - £100



Lot 450

456

A cased set of six silver hallmarked grapefruit spoons, Sheffield 1937, approx weight 135g £45 - £65

457

A cased set of six silver hallmarked tea spoons, London 1900, along with four cased hallmarked tea spoons, approx. weight 159g £55 - £65

458

A silver hallmarked Georgian cream jug, London 1819, approx weight 187g £70 - £90



Lot 458

454

Two R.J.Carr silver hallmarked desk time pieces, Sheffield 2000 £40 - £60

455

Three silver hallmarked sauce boats, Birmingham 1967, Dublin 1914, Birmingham 1892, approx weight 448g £160 - £200



Lot 454

459

Five silver hallmarked cream jugs, various marks to include London, approx weight 442g

£160 - £200

460

A silver hallmarked cream jug, Chester 1929, h. 10 cm, approx. weight 111g

£40 - £60

461

Five silver hallmarked and white metal items to include three sugar bowls, trophy cup and a cup, approx weight 591g

£210 - £260

462

Nine assorted silver hallmarked items to include butter dishes, salts, egg cups and a pepperette, approx. weight 289g

£100 - £130

463

A set of three white metal salts in the form of fish, approx. weight 193g

£60 - £100

464

A pair of Georgian condiment spoons, Newcastle 1827, approx weight

£30 - £40

465

A collection of silver hallmarked condiment and caddy spoons, various dates and makers, approx weight 190g

£65 - £85

466

A collection of silver hallmarked and white metal items to include compact, trinket boxes, pill boxes, lidded bowl etc., approx. weight 280 cm

£100 - £150

467

Two silver hallmarked bud vases, a hallmarked candle stick and a white metal candle stick marked 830s

£40 - £60

468

A large collection of silver hallmarked tea spoons, approx. weight 1879g

£700 - £750

469

A matched set of eight probably Georgian silver hallmarked serving spoons, approx. weight 458g

£160 - £200

Lot 463



Lot 475

470

Seven pairs of silver hallmarked sugar tongs to include Georgian and Newcastle marks, approx. weight 195g

£70 - £90

471

A cased set of silver hallmarked tea spoons, Sheffield 1933 with golf club design along with four hallmarked tea spoons with golf club handles, approx. weight 100g

£40 - £50

472

Five silver hallmarked spoons including Georgian examples, approx. weight 227g

£80 - £100

473

A collection of silver hallmarked items to include a Georgian ladle, stilton scoop, fruit knife, button hooks etc, approx weight 263g

£130 - £160

474

A white metal punch ladle with horn handle along with a white metal candle snuff

£30 - £40

475

A possibly Russian enameled white metal spoon

£30 - £50

476

A collection of silver hallmarked serving and other spoons, various makers and dates, approx weight 1860g

£680 - £740

477

A silver hallmarked salver, the ornate border on four claw feet, Birmingham 1899, dia 27.5, approx. weight 471g

£180 - £220

478

A silver hallmarked footed salver, the beaded and shaped edge on four ball and claw feet, Birmingham 1936, Makers mark for Barker Brothers Silver Ltd., dia. 29.75 cm, approx. weight 906g

£330 - £380

479

A silver hallmarked footed salver with re-entrant border, Sheffield 1964, makers mark for Mappin & Webb, w. 29.25, approx. weight 1020g

£360 - £400

BEDFORD

10 March

9 June

15 September

8 December



SPORTING GUNS & ANTIQUE ARMS



Our wide experience of weapons of all kinds together with our market knowledge, auction expertise, specialist contacts and understanding of the relevant law and regulations, ensures that we can provide a complete and dedicated centre for acquisition and disposal.

Entries invited include: English & Continental Shotguns, Sporting & Target Rifles, Vintage & Modern Air Weapons, Flintlocks, Percussion & Pinfire Weapons, Collectors Cartridges, Edged Weapons, Cases, Magazines & Shooting equipment

guns@southamsauction.co.uk

01234 269 082

www.southamsauction.co.uk



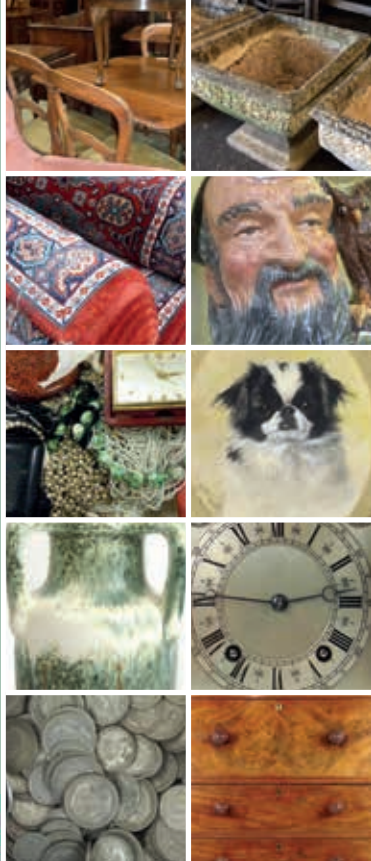
Situated in the town centre,
Locke & England held their first auction
sale in Leamington Spa in 1834 and
continue to hold regular antique, general
household and specialist sales as well as
offering a valuation service.

Our popular auction every Thursday includes
approximately 400 lots of antique & general
furniture, household goods, jewellery, tools,
modern electrical items and garden equipment.

info@leauction.co.uk

01926 889 100

www.leauction.co.uk



LEAMINGTON SPA WEEKLY AUCTION

LEAMINGTON SPA

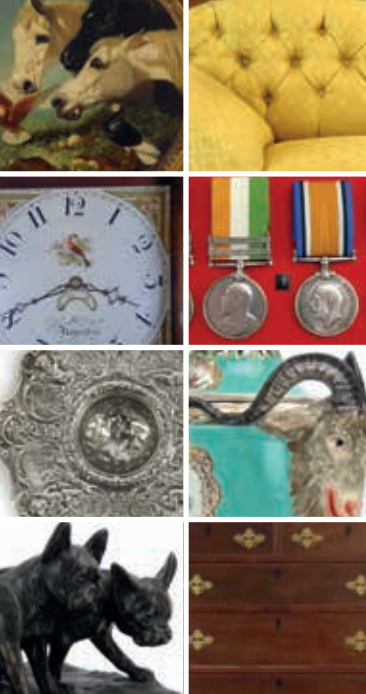
Sale every Thursday
commencing 10:30am

Viewing

Wednesday prior
9am to 7pm
Morning of the
sale 9am

Sale Entries Invited

Friday, Monday &
Tuesday between
8.30am and 5pm



These specialist auctions have a worldwide following with bidders from Europe, Asia, the Middle East and further afield competing against the saleroom.

Every month a range of Antique Furniture, Pictures, Ceramics & Glass, Silver, Metalware, Boxes and Caddies, Militaria and other collectors' items are offered for sale.

antiques@peacockauction.co.uk

01234 266 366

www.peacockauction.co.uk



info@leauktion.co.uk

01926 889 100

www.leauktion.co.uk



BEDFORD

7 January
4 February
4 March
1 April
6 May
3 June
1 July
5 August
2 September
7 October
4 November
2 December

LEAMINGTON SPA

27 January
31 March
26 May
28 July
29 September
24 November

**ANTIQUE FURNITURE &
COLLECTORS' ITEMS**

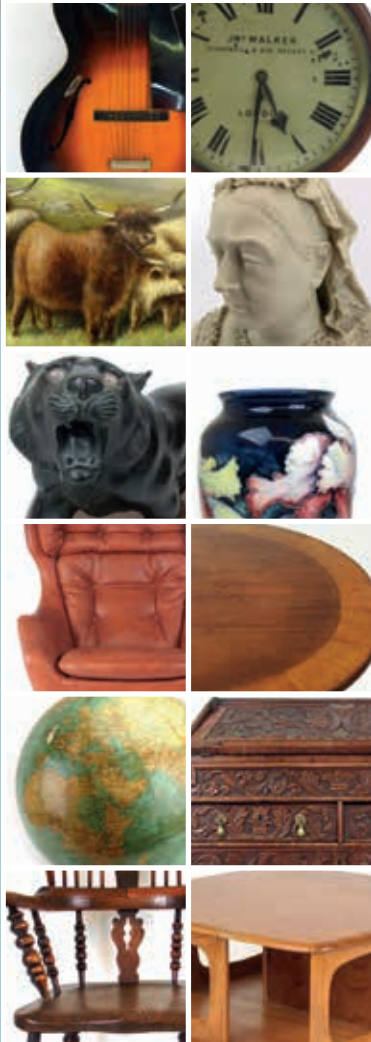


COLLECTION & PROPERTY CLEARANCE SERVICE

Our friendly experienced team can take the worry out of clearing a property. We have various sizes of vehicle available all of which are equipped to ensure your goods are transported safely.

Our collection team undertake removals of individual items through to complete property clearances. We also collect commercial assets including plant and machinery, motor vehicles, stock in trade, shop, office and factory contents.

- Pre-collection advice
- Our own fleet of vehicles
- Collection at agreed date and time
- Highly competitive rates
- No up-front charges
- Fully insured
- Registered to remove waste





The Studio of Professor Tim Threlfall (1940-1999)

W&H Peacock & Locke & England are pleased to offer for auction the contents of the late Timothy Threlfall's studio. The collection is mainly his own sculptures and art, but also features artwork from his contemporaries.



As a graduate student, Tim spent the summers of 1961 and 1962 in the building trade in Germany where he worked with steel on a large scale. This experience helped him to develop into a sculptor of monumental works.

In 1962, he contributed to the socialist Artists International Association group show in London. As a result of this link, Threlfall was not permitted to enter Spain (which was under the rule of right wing General Franco) when he attempted to visit the great Spanish sculptor Eduardo Chillida later that year.

He worked alongside Henry Moore, Elisabeth Frink, Giacometti, Sol le Witt, Bracusi, John Hoskin and Robert Smithson. He produced commissions for John Player Ltd, Leighton Park School, Coventry City Council and the Royal Ordinance Corps. His work was exhibited in numerous locations including London, New York, the Netherlands and Germany.

Amongst the 100+ items included in the auction are pieces from Tim's famous 'After Marakesh' and 'Barra' ranges:

'After Marakesh'

The sense of ever-present time and space in landscapes and buildings is a persistent motivating feeling. It was deeply felt in the city of Marakesh. Tim created a range of sculptures after his visit to the city.

'Barra Suite of Works'

In the 1980's, Tim visited Barra in the Outer Hebrides. He commented "I saw the residue of life on the beaches. The huge bones of whales and it sounds morbid but the sea possessed more life than the whole island. It really was inspiring." The sentiment of melancholy enters the works in this range.

Art Education

1960-1963 Bath Academy of Art

1963-1964 Awarded Netherlands Scholarship for the Postgraduate Study of Fine Art

1976-1979 University of Warwick (part-time) research for the award of a PhD in the History of Art

Full-Time Teaching

1964-1971 Loughborough College of Art and Design (Lecturer in Fine Art & Sculpture)

1972 Coventry Polytechnic (Senior Lecturer in Fine Art)

1984 Coventry Polytechnic (Principle Lecturer in Sculpture and Course Tutor in Fine Art)

1989 Coventry University (Reader in Fine Art)

TO BE SOLD BY AUCTION
Friday 18th February 2022
Bedford Auction Centre



ENTRIES NOW INVITED

For our next specialist auction of
Antiques and Collectable's at the
Leamington Spa Auction Centre

Recent Highlights



Hammer Price £5,500



Hammer Price £420

Terms used in this catalogue have the following meanings.

Please note that all statements in this catalogue, regarding authorship, attribution, origin, date, age, provenance and condition are statements of opinion and are not treated as a statement of fact.

1. A N ARTIST

In our opinion, the work is by the artist.

2. ATTRIBUTED TO A N ARTIST

In our opinion, the work is of the period of the artist which may be whole or in part the work of the artist.

3. STUDIO, (CIRCLE OR WORKSHOP) OF A N ARTIST

In our opinion, the work is of the period and closely relates to his style.

4. SCHOOL OF A N ARTIST

In our opinion, the work is by a pupil or a follower of the artist.

5. MANNER OF A N ARTIST

In our opinion, the work is in the style of the artist and is of a later period.

6. AFTER A N ARTIST

In our opinion, this work is a copy of the artist.

7. ASCRIBED TO A N ARTIST

In our opinion, this work is not by the artist, however, previous scholarship has noted this to be a work by the artist.

8. SIGNED (OR DATED)

The work has a signature (or date) which in our opinion is genuine.

9. BEARS SIGNATURE (OR DATE)

The work has a signature (or date) which in our opinion is not authentic.

If you have antiques and collectable's that you are thinking of selling we would be delighted to provide complimentary valuation advice.

You are invited to bring along items for complimentary auction advice without obligation.

For items of a more general nature please feel free to visit our salerooms during our take-in days (except Bank Holidays) where we will be able to accept entries for our weekly sales.

Alternatively, you may prefer to email us an image of items by simply contacting the relevant department. It is also possible to arrange a home visit by one of our specialists.



COMPLIMENTARY VALUATIONS

BEDFORD

Valuation days at Bedford are held by appointment every other Thursday. To book an appointment please phone 01234 266 366

LEAMINGTON SPA

Valuation days at Locke & England are held by appointment once a month. To book an appointment please phone 01926 889 100



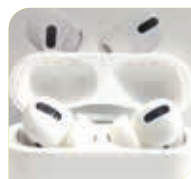
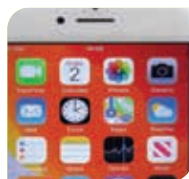
Apple Stock, Macbooks, iPhones, iPads, Watches

TO BE SOLD BY LIVE AUCTION

Saturday 29th January 2022

Commencing at 10.00am

Viewing: Friday prior 9.00am - 8.00pm, morning of sale from 8.30am



W&H PEACOCK
AUCTIONEERS & VALUERS

Bedford Auction Centre
Eastcotts Park, Wallis Way, Bedford, Bedfordshire MK42 0PE
01234 266 366 or info@peacockauction.co.uk

www.peacockauction.co.uk