

W&H PEACOCK
AUCTIONEERS & VALUERS

Mid Century Design

Bedford Auction Centre
Friday 16th August | Commencing at 10.30am

Viewing: Friday 9th August 9am to 8pm
Saturday 10th August 9am to 5pm
Thursday 15th August 9am to 5pm
and Morning of Sale from 9am
www.peacockauction.co.uk



1 A 1950/60's German wall plaque by Karlsruhe Majolika modelled as birds in flight, 51 x 35 cm
Est £50 - £80



2 A 1964 wall plaque modelled as a peacock, 31 x 38 cm
Est £50 - £70

3 A 1950/60's German wall plaque by Bückeburg modelled as a still life, 31 x 24 cm
Est £30 - £50



4 Helge Pfaff for Bückeburg, a German wall plaque modelled as red fish, labelled, 27 x 22 cm
Est £20 - £30

5 A 1950/60's German wall plaque by Schaffenacker modelled as three horses, 46 x 20 cm, together with a circular plate decorated in a similar manner (2)
Est £50 - £70



6 A set of three 1950/60's wall plaques decorated with flowers on a bright ground, initialled LS, 47 x 18 cm each (3)
Est £60 - £80



8 A pottery wall plaque modelled as physalis, 45 x 35 cm
Est £20 - £30

7 A 1960's German pottery wall plaque by Ruscha Keramik modelled as red lilies, 35 x 46 cm
Est £30 - £50





- 9 A near pair of 1950/60's German wall plaques by Schaffenacker modelled as stylised still lifes, largest 25 x 24 cm

Est £60 - £80

- 11 A group of 1960's pottery wall plaques by Karlsruhe Majolika depicting birds including Ruscha Keramik and others (6)

Est £80 - £120

- 12 A set of five 1960's German pottery plaques, the blue grounds decorated with fruits and shrubs (5)

Est £80 - £120

- 10 A 1960's pottery wall plaque modelled as blue flowers on a yellow ground, 41 x 20 cm

Est £20 - £30



- 13 Ole Wanscher (Danish 1903-1985) for Poul Jeppesen, a set of four teak and burgundy leather upholstered 'PJ412' armchairs, badges to the undersides (4) *SFP

Est £600 - £800

- 14 After Wassily Kandinsky, a carpet wall hanging tapestry, signed in the weave, 90 x 150 cm

Est £150 - £200

- 15 A set of three 1970/80's Hille cantilever office chairs with grey leather upholstery, designer unknown but the arms resemble Fred Scott's 'Supporto' chair, labels to undersides (3) *Removed from Centre Point, London, during the refurbishment in 2000. *SFP

Est £600 - £800



17



16

A set of four Italian 'Elyt' chairs by Sintesi, each with chromed tubular frames, black seats and shell backs

Est £80 - £120

17

Hans J Wegner (Danish, 1914-2007) for Carl Hansen & Son, a set of five CH47 chairs with ebonised frames and natural cord seats, all labelled, serial numbers include 298525 (5)

Est £400 - £600

18

Hans J Wegner (Danish, 1914-2007) for Carl Hansen & Son, a set of four CH47 chairs with ebonised frames and cord seats, all labelled, serial numbers include 281316 (4)

Est £400 - £600

19

A set of eight Danish mahogany slat-back dining chairs with upholstered seats by Vamdrup Stolefabrik, stamped *SFP

Est £150 - £200

18



20

Niels Moller (Danish, 1920-1982) for Gudme Mobelfabrik, a 1960's rosewood and crossbanded circular extending dining table with two fitted leaves, 122-220 cm CITES Article 10 Transaction Specific Ref: 24GBA103PYDBT

Est £300 - £500

21

A 1970's Danish rosewood and mahogany bar cart/trolley designed by Ole Wanscher (Danish, 1903-1985), the swivel and folding top with brass hinges over a second removeable tray, on turned legs with castors, 70 x 44 cm CITES Article 10 Transaction Specific Ref: 24GBA10CI9VTG

Est £100 - £150

22

A 1960's rosewood and crossbanded coffee table of rectangular for with a fitted drawer and two removeable trays, on turned legs, 110 x 55 cm CITES Article 10 Transaction Specific Ref: 24GBA10J8JTOR

Est £150 - £200



- 23** Peter Hayward for Vanson, a 1960's teak and rosewood sideboard, the four drawers with square handles and flanked by two doors, maple lined interior, 190 x 48 x 70 cm CITES Article 10 Transaction Specific Ref: 24GBA10ZHJGUU

Est £300 - £500

- 24** Peter Hayward for Vanson, a 1960's teak dining suite including an extending table, 162-192 x 86 cm, together with six matching chairs including two carvers *SFP

Est £200 - £300

- 25** Niels Moller (Danish, 1920-1982), a 1950/60's teak Model 44 tea trolley with integral moulded handles over a second tier, on tapering supports with castors, stamped, 81 x 45 x 61 cm

Est £250 - £350

- 26** A vintage Strand studio/ theatre spot light on a later static stand together with a similar spotlight on a mobile four-star stand (2)

Est £150 - £200



- 27** A 1960/70's Scottish occasional table by A.H. McIntosh with a 'starburst' walnut surface, the base with a rise and fall mechanism on four aluminium legs, di. 100 cm

Est £150 - £200

- 30** A 1960's Bath Cabinet Makers (BCM) teak sideboard with four drawers and three doors, 215 x 46 x 74 cm

Est £200 - £300

- 31** A 1970/80's Danish teak and crossbanded chest of five drawers on a plinth base, 100 x 47 x 68 cm

Est £150 - £200

- 28** A set of four 1960's Danish dining chairs designed by Erik Buch upholstered with cream flecked fabric *SFP

Est £80 - £120

- 29** A Uniflex teak chest of six drawers with moulded handles, on slab legs, labelled, 75 x 46 x 114 cm

Est £150 - £200



- 32** A G-Plan 'Fresco' Range teak and crossbanded extending dining table, di. 122 cm, together with a matching set of four chairs upholstered in black vinyl *SFP

Est £300 - £500



- 33** A nest of three Danish teak and tile-topped occasional tables by Mobelfabrikken Tøften, max 56 x 40 cm

Est £40 - £60

- 35** Uno & Osten Kristiansson for Luxus, a 1960's Swedish wall light, the cylindrical shade on an oak shaft, bearing label

Est £50 - £80

- 37** After Pablo Picasso, 'Guernica', off-set lithographic poster, 21 x 49 inches

Est £20 - £30

- 34** A set of Scottish teak 'Triform' occasional tables by McIntosh, the largest with a folding surface over two smaller nesting tables, 75 x 40 cm

Est £50 - £80

- 36** After Fernand Leger (French, 1881-1955), 'Untitled', shapes on a turquoise ground, lithograph printed by Mourlot, Goldmark Gallery verso, image 30 x 25 cm

Est £60 - £80



- 38** Rimi Yang (Korean-American, contemporary), A face looking from a red and green ground, signed verso, mixed media, 30.5 x 30.5 cm

Est £250 - £350

- 39** Alice Valdez (1939-2024), 'Mystery Lady', Native American Female, signed, batik, image 24 x 18 cm

Est £80 - £120

- 40** 20th Century School, Two figures rowing a boat, initialled LP, off-set lithograph, image 28 x 36 cm

Est £20 - £30



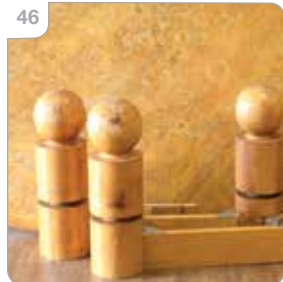
- 41 A 1960's Swedish bookcase-cabinet by Hugo Troeds, with three drawers, filing area and two shelves over a pair of cupboard doors, on tapering legs, badge to the rear, w. 95 cm, h. 165 cm
Est £100 - £150

- 43 Niels Moller (Danish, 1920-1982), a 1950/60's teak elbow or desk chair with a seagrass woven seat, badge to the underside
Est £300 - £500

- 45 Niels Moller (Danish, 1920-1982), a 1950/60's teak elbow or desk chair with a seagrass woven seat
Est £300 - £500

- 42 A 1690/70's Swedish teak bureau, the fall-front over three drawers with flush handles, on beech tapering legs, w. 79 cm, h. 115 cm
Est £100 - £150

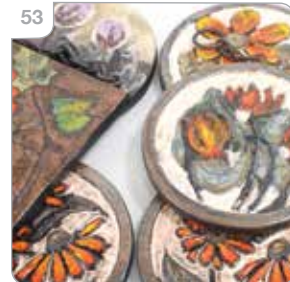
- 44 Niels Moller (Danish, 1920-1982), a 1950/60's teak elbow or desk chair with a seagrass woven seat
Est £300 - £500



- 46 A 1980/90's Modernist beech crossbanded conference table, the oval surface on four turned skittle-form legs, 250 x 150 cm
Est £100 - £150

- 47 A 1980/90's Modernist beech crossbanded conference table, the oval surface on four turned skittle-form legs, 250 x 150 cm
Est £100 - £150

- 51 A pair of Karlsruhe Majolika pottery wall plaques relief decorated with flowers, 41 x 40 cm, together with another similar German wall plaque (3)
Est £60 - £80



- 48 A 1970's Danish 'Light Studio' white enamelled ceiling light of squat form by Horn
Est £40 - £60

- 52 A group of three German pottery wall plaques decorated with flowers, including two by Ruscha Keramik (3)
Est £40 - £60

- 53 A collection of eleven circular German pottery wall plaques, together with a similar rectangular example, each held by a chain (12)
Est £100 - £150

- 49 A pair of 1970's Danish blue enamelled squat ceiling lights attributed to Horn
Est £60 - £80



- 54 A group of six various German pottery plates or circular plaques, each decorated with flowers, together with a circular geometric wall plaque (7)
Est £80 - £120

- 50 A 1970's Danish red enamelled ceiling light with a gold coloured cap
Est £30 - £50





- 55** A mixed group of German and Swedish pottery tiles and plaques by Jie and others (15)
Est £80 - £120

- 57** A Modernist Roperwerk bronze plaque depicting Einstein's mathematical formula, together with four further commemorative plaques and a brass musician (6)
Est £60 - £80

- 59** A group of studio pottery vases by Duilio Jimenez, Ruscha, Modexa and others (5)
Est £60 - £80

- 56** A group of five Israeli and German pottery plaques modelled as buildings (5)
Est £30 - £40

- 58** A set of six Italian plates by Mancini modelled as strawberries, together with a German tomato plaque (7)
Est £20 - £30

- 60** Two sets of 1960's German wall plaques, each comprising of four graduated circles (2)
Est £60 - £80

- 61** Philippe Starck (French, b.1949) for Emeco, a brushed aluminium 'Hudson' desk chair, manufacturer's marks to reverse
Est £400 - £600



- 64** After David Shrigley, Animal Series: 'I will not fight', a bull, off-set lithograph printed in colours in 2020, Narayana Press
Est £40 - £60

- 62** A set of four 1960's teak and papercord dining chairs in the manner of Niels Moller (4)
Est £150 - £200

- 63** Hans Olsen (Danish, 1919-1992) for Frem Rojle, a set of four 1960's 'Roundette' stacking chairs with teak frames and black vinyl upholstery *SFP
Est £200 - £300

- 65** After David Shrigley, Animal Series: 'He will only eat squid ink pasta', a giraffe, off-set lithograph printed in colours in 2020, Narayana Press
Est £40 - £60



69



68

A suite of 1970/80's bronze cutlery, some with XX stamps, comprising: 7 x table forks, 9 x dessert forks, 8 x fish forks, 8 x table knives, 8 x dessert knives, 8 x butter knives, 8 x table spoons, 8 x dessert spoons, 8 x teaspoons, 1 x serving ladle, 2 x serving spoons, 2 x serving forks and 1 x sauce ladle

Est £150 - £200

66

After David Shrigley, Animal Series: 'You are too close... Please move back' a bird, off-set lithograph printed in colours in 2020, Narayana Press

Est £40 - £60

67

After David Shrigley, Animal Series: 'Some of my best friends are pigs', off-set lithograph printed in colours in 2020, Narayana Press

Est £40 - £60

69

A 1960's Olivetti 'Valentine' typewriter in red, designed by Ettore Sottsass

Est £80 - £120



70

A 1970's British dining set including a laminate table, 120 x 63 cm, two benches with lift-seats and two matching chairs (5) *SFP

Est £200 - £300

71

A 1960/70's Danish teak and crossbanded extending dining table, di. 128 cm, with two fitted leaves, w. 50 cm each

Est £150 - £200

73



72

A 1970's Danish cherry cabinet with a cupboard door and four drawers on later turned legs, w. 120 cm

Est £150 - £200

73

A 1970's Danish cherry cabinet with two cupboard doors on later turned legs, w. 120 cm

Est £150 - £200

- 74 A 1940's Danish teak high-board cabinet, the two sliding doors with moulded handles enclosing a shelved interior, over an arrangement of drawers with leather clad handles, on beech legs, w. 160 cm, h. 128 cm

Est £300 - £400



- 75 A pair of G-Plan 'Fresco' Range teak single-drawer bedside cabinets on later tapering legs, w. 50 cm

Est £100 - £150

- 76 A late 20th century bronzed sculpture modelled as two fish, on a marble plinth and oak pedestal, h. 27 cm, w. 33 cm, together with a set of three Stoff Nagel type stacking candle holders (2)

Est £80 - £120

- 77 An art glass sculpture of triangular form, indistinctly signed, h. 22 cm, together with two further glass table pieces (3)

Est £40 - £60

- 78 A Murano art glass sculpture modelled as a fish by Oscar Zanetti, signed, h. 30 cm

Est £150 - £200



- 79 An American absinthe jug and five glasses by Faber Bros of New York

Est £40 - £60

- 80 A Murano art glass table lamp modelled as a clown and street lamp, h. 41 cm

Est £120 - £150



- 81 A group of art glass including a Whitefriars 'Ribbon' vase, h. 23 cm, a uranium glass Empoli vase, h. 27 cm, a green cased slender vase etc. (11)

Est £80 - £120

- 82 A group of sixteen Swedish & Danish pottery figures by Jie, Nymolle, Illums Bolighus and others (16)

Est £40 - £60



- 83 Charmian Edgerton (b. 1944), 'Waiting', signed, pastel, image 20 x 13 cm, together with 'Interval' and 'Ballet Shadows' (3)

Est £150 - £200





- 84** Ernest Blinco (20th Century), 'Aztec Women', signed, oil on board, image 46 x 61 cm
Est £80 - £120

- 85** A late 20th century Danish spun aluminium two-tier ceiling light
Est £40 - £60

- 86** A 1970's Danish red enamelled open ceiling light
Est £40 - £60

- 87** A 1970's Danish lilac enamelled open ceiling light
Est £30 - £50



- 88** A 1970's Danish copper-coloured ceiling light with a blue enamelled outer band
Est £30 - £50

- 89** A 1970's Danish copper coloured ceiling light with a perspex diffuser/underside
Est £50 - £70



- 90** A 1970/80's Danish white enamelled pull-down ceiling light
Est £30 - £50

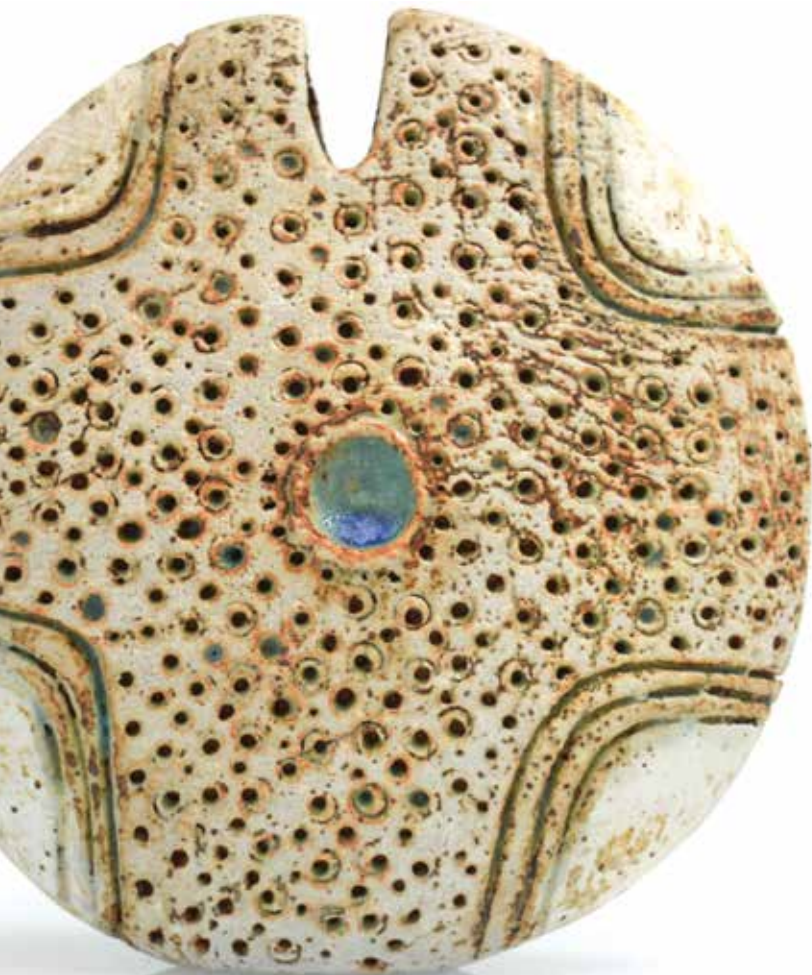
- 91** After René Magritte, 'La Magi Noire', off-set lithograph, 27 x 20 inches
Est £20 - £30

- 92** After Patrick Nagel, 'Commemorative 11', published by Mirage Editions, serigraph, 36 x 24 inches
*Nagel produced a series of 15 original posters that he titled 'Commemorative' posters over a period of four years. The work is representational of the type of high-tech glossy look of the '80s.
Est £30 - £50

- 93** Adolphe Mouron Cassandre (French, 1901-1968), 'Venezia', off-set lithographic poster, lacking borders, stuck to board, image 95 x 58 cm
Est £50 - £80

- 94** A Murano chandelier, the anthracite stems supporting twenty lilac iridescent glass circular drops
Est £60 - £100





- 95** Alan Wallwork (1931-2019), a stoneware vase of split pod form, incised AW mark to the underside, h. 18 cm

Est £200 - £300

- 96** Alan Wallwork (1931-2019), a stoneware vase of wedge form, incised AW mark to the underside, h. 15 cm

Est £200 - £300

97



- 97** A pair of fossilised wood bookends from Oregon, USA, h. 31 cm each *Purchased from Harrods, Knightsbridge in 1989, and sold with the sales receipt.

Est £100 - £150

- 98** A 1950's Murano 'Sommerso' glass vase of organic form, the red centre cased with yellow, blue and clear glass, unsigned, remains of sticker, h. 34 cm

Est £300 - £500





- 99** Attributed to Flavio Poli, a 1950's Murano 'Sommerso' scent bottle and stopper, the green centre cased in pink and clear glass, unsigned, h. 59 cm

Est £200 - £300

- 100** Albert Hallam & Jim Hayward for Beswick, a group of four 1950's 'Freeform' ceramics decorated with elongated houses and trees including 1367 vase and 1358 dish (4)

Est £150 - £200

- 103** A set of four 1960/70's stacking stools with shaped seats and tubular legs in the style of Arne Jacobsen's 'Dot' stools (4)

Est £80 - £120



- 101** A set of 1970's Irish teak nesting occasional tables by O'Donnell Design, max. 88 x 37 cm

Est £100 - £150

- 102** A 1960/70's teak console or telephone table with two drawers, on canted legs, 80 x 20 x 53 cm

Est £60 - £80



- 104** Matthew Hilton for De La Espada, a low lounge chair with a walnut frame and loose cushions *SFP

Est £200 - £300

- 105** Matthew Hilton for De La Espada, a low lounge chair with a walnut frame and loose cushions *SFP

Est £200 - £300

- 106** Matthew Hilton for De La Espada, a low lounge chair with a walnut frame and loose cushions *SFP

Est £200 - £300

- 107** An American 'Low Rider' bicycle with 16 inch tyres and a spare tyre to the rear

Est £80 - £120



108



108

A 1930/40's Art Deco table attributed to De Coene Frères, the marquetry or specimen extending surface resting on a walnut stepped column, 'beaten' metalwork base and block feet, with two further collapsible legs hidden to the underside, 127 x 171 x 77 cm

Est £300 - £500

110



109

Alexander Begge (Italian, b. 1941) for Casala, a set of four fibreglass stacking 'Casalino' armchairs

Est £150 - £200

110

Attributed to Naughtone, a pair of contemporary wingback 'Hush' armchairs on chromed slides *SFP

Est £200 - £300



111

A 1980/90's dining set including a beech laminate circular dining table on stained burgundy legs, di. 120 cm, together with four matching chairs

Est £150 - £200

114

Jasper Morrison for Emeco, an American '1 Inch Reclaimed' chair in grey, with box

Est £50 - £70

117

A Finnish occasional table of four slab legs by Askö, label to the underside, 75 x 75 x 50 cm

Est £80 - £120

112

In the manner of Achille Castiglioni for Flos, an 'Arco' style table lamp with chromed shade and arc shaft

Est £50 - £80

115

Ettore Sottsass Associati for Segis, a 2005 'Trono' chair in transparent, moulded markings

Est £150 - £200

117



113

Jasper Morrison for Emeco, an American '1 Inch Reclaimed' chair in green, with box

Est £50 - £70

116

A 1960's Swedish teak extending table with two fitted leaves, on a beech column with four splayed legs and brass caps, 106-196 x 106 cm

Est £200 - £300

118

A Swedish slatted pine bench, w. 150 cm

Est £50 - £80

119 A 1970's Swedish stained beech three seater sofa with loose black button-upholstered seats, together with a matching armchair (2) *SFP

Est £400 - £600

120 A sculptural seat incorporating a beech spindle back rocking chair set inside a concrete slab, 124 x 61 cm

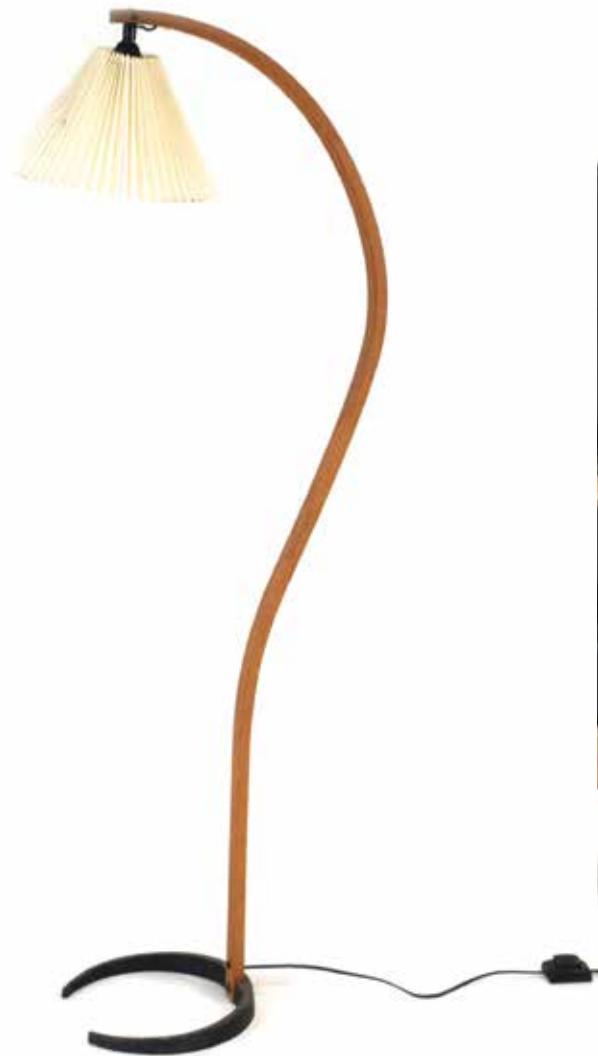
Est £80 - £120

121 A Swedish maple occasional table of unusual form on skittle-shaped legs, 138 x 87 x 51 cm

Est £150 - £200

122 Micheli Alessio 'Mads' Caprani (Danish, 1942-2014) for Caprani Light A/S, a 1970's Danish laminated teak arc-type floor lamp with a metalwork base and linen shade, label to shaft

Est £200 - £300



Mid-Century Design Soft Furnishings Policy

The Furniture and Furnishings (Fire) (Safety) Regulations 1988 (as amended in 1989 and 1993) state that all soft furnishings holding foam must conform to BS 5852 standards. This means that any post-1988 furniture will need to bear a fire label for auction purposes.

The following exceptions apply:

- Items constructed pre-1950. [Regulation 4(a)]
- Items being sold to someone who is in the business of reupholstering furniture. [See Regulation 4[b] and Consumer Protection Act 1987, s.46(7)]
- Items being sold to someone who is in the business of dealing in furniture. [Regulation 14(1)]
- Items being sold that will not be used in a domestic setting in the UK; e.g. for export, for use in a museum or theatre, as a work of art. [Regulation 3(1a) and 4(c)]

The Mid-Century period has been recognised as an area of increased interest to collectors for many years now. The relevant soft furnishings in our sales have been carefully selected to be collector's pieces which are purchased for their design qualities.

Soft furnishings in this sale are being sold as collector's items and are NOT intended for private use in the UK. They may not be in compliance with the Furniture & Furnishings (Fire)(Safety) Regulations 1988 and should be re-upholstered to conform to BS 5852 prior to any use in a domestic dwelling.

Bids are only accepted on the agreement that the furnishings will not be used in a domestic dwelling in the UK.

This policy is in-line with all major UK auctioneers and the Mid-Century trade.

123 A 1970's Danish white enameled single spot standard lamp on an aluminium shaft
Est £40 - £60

124 A 1960/70's Danish copper and black enameled single-spot standard lamp
Est £30 - £50

125 A 1970/80's Danish brass coloured standard lamp, the single shade with perspex roundels
Est £30 - £50

126 A pair of 1950/60's Swedish teak and pale gold upholstered armchairs, attributed to Bröderna Anderssons *SFP
Est £600 - £800



127 A pair of 1950/60's Swedish armchairs by Bröderna Anderssons, the teak frames with green fabric button upholstery, badges to the underside *SFP
Est £600 - £800

128 A 1950/60's Swedish armchair by Bröderna Anderssons, the teak frame with green fabric button upholstery, badge to the underside *SFP
Est £300 - £400



129 A 1950/60's Swedish teak framed armchair with floral blue upholstery and organic arms *SFP
Est £300 - £400

130 A 1960's Swedish blue fabric armchair with teak mounts to the arms and square beech legs *SFP
Est £300 - £400



131 Grete Jalk (Danish, 1920-2006) for Poul Jeppesen, a pair of 1950/60's Danish PJ-56 teak armchairs with loose grey upholstered seats and backs, badges to undersides *SFP
Est £800 - £1200

132 A pair of 1960's British 'His & Hers' armchairs by R.W. Toothill with teak frames, Pirelli webbing and black upholstered loose seats and backs *SFP
Est £600 - £800



- 133** Hans J Wegner (Danish, 1914-2007) for Fritz Hansen, a set of six 1950's Model FH 4101 chairs with teak 'floating' seats and backs on contrasting beech frames

Est £2000 - £2500



- 134** A group of three Italian porcelain stoneware figures by Lineasette including a stylised bull, an elephant and a face, all with stickers (3)

Est £100 - £150



- 135** After John Gilroy (1898-1985), 'Lovely Day for a Guinness', 'Guinness for Strength', 'My Goodness my Guinness', three lithographic prints, images 28 x 20 cm each (3)

Est £60 - £100



- 136** A 1980's light oak Conran coffee table on triangular tapering supports, badge to the underside numbered 'BM 0210', 100 x 100 x 30 cm

Est £80 - £120



- 137** After Le Corbusier, Charlotte Perriand and Pierre Jeanneret, an 'LC4' style chaise lounge *SFP

Est £150 - £200

- 138** After Le Corbusier, Charlotte Perriand and Pierre Jeanneret, an 'LC3' style armchair *SFP

Est £80 - £120



- 139** After Marijke Koger (Dutch, b. 1943), 'The Fool', lithographic poster, Trigram Press 2nd Printing, 1967, image 50 x 38 cm

Est £100 - £150

- 142** After Roy Lichtenstein (1923-1997), 'Drowning Girl', lithographic print, image 27 x 27 cm, together with a print after Banksy (2)

Est £60 - £80

- 143** After Ron Arad (British-Israeli, b. 1951), a 'Rover' style chair, the original Rover seat held on a metalwork arc frame *SFP

Est £300 - £500

- 144** After Ron Arad (British-Israeli, b. 1951), a 'Rover' style chair, the original Rover seat held on a metalwork arc frame *SFP

Est £300 - £500

- 145** After Ron Arad (British-Israeli, b. 1951), a 'Rover' style chair, the original Rover seat held on a metalwork arc frame *SFP

Est £300 - £500

- 140** After Marijke Koger (Dutch, b. 1943), 'A is for Apple', lithographic print, image 63 x 46 cm

Est £40 - £60

- 141** After Andy Warhol (1928-1987), 'Lion', three lithographs, 27 x 20 cm each, framed as one

Est £60 - £80



- 146** After Ron Arad (British-Israeli, b. 1951), a 'Rover' style chair, the original Rover seat held on a metalwork arc frame *SFP

Est £300 - £500

- 147** After Ron Arad (British-Israeli, b. 1951), a 'Rover' style two-seater sofa, the original Rover seats held on a metalwork arc frame *SFP

Est £600 - £800



- 148** A 1960/70's Swedish three-seater sofa with cream fleck upholstery, exposed teak arms and matching legs, w. 194 cm *SFP
Est £400 - £600

- 149** A 10960/70's Swedish three-seater sofa by Bröderna Anderssons, upholstered with pale green fabric on a teak frame, badge to the underside, w. 178 cm *SFP
Est £400 - £600

- 150** A 1950's Swedish green velour bow-fronted sofa on mahogany-finished block feet, w. 179 cm *SFP
Est £400 - £600

- 151** Hans Peter (HP) Hansen (Danish, b. 1941), a 1960's teak and crossbanded sideboard with three doors and four drawers, on tapering legs, in the manner of Arne Vodder and Omann Jun, w. 240 cm
Est £800 - £1200



- 152** A pair of 1950/60's Swedish serpentine bedside cabinets, each with a single door, on splayed legs, w. 50 cm
Est £100 - £150

- 153** Charles & Ray Eames for Vitra, an Eames Aluminium Group table, the circular beech surface on a chromed four-section base, labelled, h. 72 cm, di. 180 cm
Est £200 - £300



- 154** A 1970's teak chest of four drawers on later turned legs, 126 x 45 x 61 cm
Est £100 - £150

- 155** A pair of 1960's teak bedside cabinets with single doors, on later ebonised splayed legs, 35 x 35 x 70 cm
Est £30 - £50

- 156** A 1960's Danish teak and crossbanded metamorphic coffee table with extending brass legs, 134 x 89 cm
Est £200 - £300

- 157** A 1940/50's Danish low-back lounge armchair on teak legs by Fritz Hansen *SFP
Est £200 - £300

- 158** A pair of late 20th century Danish white enamelled pendant lights
Est £50 - £70

- 159** A pair of 1970's Danish white enamelled spherical ceiling lights
Est £60 - £80





- 160** A 1970's Danish brown enamelled ceiling light of trumpet form

Est £30 - £40

- 163** A 1970/80's cherry desk with a single pedestal, line inlaid surface and square legs with walnut caps, stamped Master pa Vaster (Master of the West), 160 x 80 cm

Est £200 - £300

- 164** A pair of 'Jigger' form Modernist metalwares vases designed by Allan Adler (American, 1916-2002), h. 27 cm

Est £120 - £150

- 161** A pair of 1970's Swedish 'Kroken' lounge chairs designed by Ake Fribytter, the brown leather seats on laminate frames *SFP

Est £150 - £200



- 162** A pair of 1970's Swedish 'Kroken' lounge chairs designed by Ake Fribytter, the brown leather seats on laminate frames *SFP

Est £150 - £200



- 165** A 1980's treacle glazed pot and cover by Andrew and Keith Crouch, together with a further studio pottery pot and cover and two bowls by Tony Gant (4)

Est £50 - £70

- 166** A near pair of graduated studio pottery bowls by David Lane, ink monograms to the undersides, di. 14.5 and 12 cm, together with a further Abington Pottery vase, a Dersingham Pottery vase and an autumnal vase by Rupert Andrews (5)

Est £60 - £100



- 167** A group of British & Scandinavian pottery including Judith Swannell Ceramics, Prinknash, Arabia etc. (17)

Est £80 - £120

- 168** Robin Welch (b. 1936), a studio pottery bowl decorated with shades of brown, impressed 'Robin Welch Pottery' stamp, di. 11.5 cm

Est £80 - £120

- 169** A Tremaen Pottery table lamp, the autumnal ground decorated with cow parsley, h. 41 cm incl. fitting

Est £40 - £60

- 170** Walter Bosse (Viennese, 1904-1979) for Karlsruhe Majolika Germany, a 1950's crackle glazed sculpture modelled as an elephant, 'Made in Western-Germany' label, 17 x 16 x 14 cm

Est £100 - £150



- 171** A pair of sculptural elongated teak swivelling heads mounted on a block plinth stamped 'Made in England Ormax', h. 24 cm

Est £40 - £60



Illustrated: lot 170, 171

- 172** 1960/70's British School, A head and shoulders portrait, unsigned, oil on canvas, 77 x 50 cm

Est £40 - £60

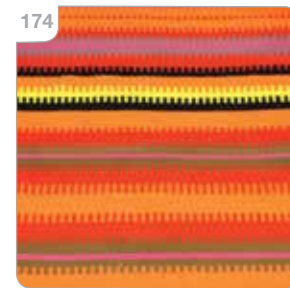
- 173** LAT (British 20th Century), A river landscape, initialled and dated '65, oil on board, image 60 x 119 cm

Est £60 - £80



- 174** A Finnish raanu wool tapestry or wall hanging with bands of orange, black, yellow, pink and red, 167 x 80 cm

Est £80 - £120



- 175** David Hardy (West Wales), 'Feeling & Form', signed verso and dated 2024, oil on canvas, image 100 x 70 cm

Est £200 - £300



- 176** John Herbert for Younger Ltd, a 1960's afromesian teak sideboard, the four graduated drawers flanked by a pair of doors, each with turned circular handles, w. 198 cm

Est £400 - £600





illustrated: lot 181, 180



- 177** John Herbert for Younger Ltd, a 1960's afromesian teak dining set including an extending drawer-leaf table, 129-209 x 80 cm, two carvers and four further chairs *SFP

Est £200 - £300

- 178** A 1950/60's walnut sideboard attributed to Gordon Russell, the three graduated drawers flanked by a pair of doors, on a sleigh-type base, w. 152 cm

Est £200 - £300

- 179** A 1960/70's teak occasional table, the rectangular surface on a pair of U-shaped supports, 106 x 47 cm

Est £40 - £60

- 180** Ben Mosley (b. 1981), An Olympic trampolinist, unsigned, oil on canvas, image 99 x 99 cm
*Ben Mosley is a British expressionist artist who is the official artist for Team GB and Artist in Residence at Wembley Stadium.

Est £500 - £700

- 181** Ben Mosley (b. 1981), A horse race, signed, oil on canvas, image 76 x 76 cm *Ben Mosley is a British expressionist artist who is the official artist for Team GB and Artist in Residence at Wembley Stadium.

Est £300 - £500

182



182

Attributed to Carl Malmsten (Swedish, 1888-1972), a 1950/60's 'Samsas' type button upholstered sofa on beech legs, w. 181 cm
*SFP

Est £300 - £400

183

A 1950/60's tub armchair upholstered in grey fabric on turned rosewood legs, probably Swedish, h. 90 cm, w. 85 cm, d. 78 cm
*SFP CITES Transaction Specific Ref:

Est £300 - £400

184

Lord Norman Foster (b. 1935) for Tecno, a 'Nomos' table, the circular glass surface resting on four arms and a chromed base with pad feet, di. 120 cm

Est £400 - £600

185

Lord Norman Foster (b. 1935) for Tecno, a 'Nomos' chromed table base with pad feet, suitable for a 120 cm top

Est £300 - £400

186

Lord Norman Foster (b. 1935) for Tecno, a 'Nomos' chromed table base with pad feet, suitable for a 120 cm top

Est £300 - £400

187

Lucian Ercolani (1888-1976) for Ercol, a Model 479 elm writing table or desk, the superstructure with two small drawers over one long drawer, on beech tapering legs, w. 68 cm

Est £300 - £500



188

Lucian Ercolani (1888-1976) for Ercol, a 1960's Model 427 easy chair with a beech frame and loose cushions *SFP

Est £150 - £200

189

Lucian Ercolani (1888-1976) for Ercol, a nest of three elm and beech 'Pebble' occasional tables, max. 63 x 44 cm

Est £250 - £300

190

Anthony Bethell (contemporary), A nude dancer within geometric colours and shapes, signed and dated 2009, mixed media, image 40 x 27 cm, together with two others by the same hand (3)

Est £60 - £80

191

A 1970/80's French chromed table lamp by SEC in the Art Deco style with an opaline glass shade, h. 42 cm

Est £80 - £120

192



192

A boxed set of six Guinness waistcoat buttons

Est £30 - £40

193

A Scandinavian two-tier pine wall-mounted shelf, w. 70 cm

Est £60 - £80

189



194 A 1960's nesting dining/ bistro set including a beech-topped oval table with a vinyl clad base, 130 x 85 x 74 cm, together with six drum stools

Est £200 - £300



195 A pair of 1970/80's G-Plan teak sliding door cabinets on later turned legs, 76 x 46 x 49 each

Est £80 - £120

196 A 1960/70's Swedish teak 'String' modular shelving system including three black metal waterfall uprights, a fall-front bureau, two sliding door cabinets, four various shelves and fittings (Qty)

Est £300 - £500

197 A set of ten late 20th century teak and upholstered dining chairs designed by Benny Linden *SFP

Est £300 - £400

198 A 1970's Danish brown metallic single-spot floor lamp on a marble-type plinth

Est £40 - £60

199 A 1970/80's Danish twin-spot standard lamp in white

Est £40 - £60

200 A 1970's brass coloured single-spot floor lamp

Est £40 - £60

201 Clarice Cliff for Newport Pottery, an 'Applique' Range bowl, circa 1930/31, decorated in the 'Applique Blue Lucerne' pattern, with applied Bizarre mark and facsimile signature, di. 24 cm, h. 10 cm

Est £400 - £600



202 Clarice Cliff for Newport Pottery, a Bizarre Range 'Patina' honey pot and cover, di. 10 cm, together with a 'Raffia' pot and cover (2)

Est £80 - £120

203 Clarice Cliff for Wilkinsons, a Bizarre Range 'Autumn Crocus' honey pot and cover, di. 9.5 cm

Est £40 - £60





- 204** Clarice Cliff for Wilkinsons, a Bizarre Range 'Rhodanthe' pot and cover, h. 12 cm, together with a smaller example in the same pattern and six further cruets/pots (8)

Est £60 - £100

- 207** Clarice Cliff, a group of Bizarre and Fantasque Range cylindrical containers and covers in various patterns including 'Bamboo', 'Delicia Pansies', 'Crocus' etc. (5)

Est £80 - £120

- 208** Clarice Cliff, a group of spherical honey pots and covers decorated in various patterns including 'Gibraltar', 'Aurea', 'Crocus', 'Lorna' etc. (6)

Est £100 - £150

- 205** Clarice Cliff for Newport Pottery, a Bizarre Range 'Dutch Boy' cruet, h. 7.5 cm

Est £50 - £80

- 206** Clarice Cliff for Newport Pottery, a vase modelled as a book decorated in the 'Swallows' pattern, h. 12 cm

Est £30 - £50



- 209** Clarice Cliff, a group of honey pots and covers in various patterns including 'Gayday', 'Sungay', 'Sandon', 'Canterbury Bells' etc. (12)

Est £80 - £120

- 211** Clarice Cliff for Wilkinsons, a Bizarre Range 'Oceanic' jug, h. 15 cm

Est £80 - £120

- 213** Clarice Cliff for Newport Pottery, a 'Marguerite' cruet set (3)

Est £40 - £60

- 210** Clarice Cliff for Newport Pottery, a Bizarre Range jug decorated in the 'Latona' pattern, possibly 'Latona Lollipop', h. 18 cm

Est £150 - £200

- 212** Clarice Cliff for Wilkinsons, a Bizarre Range 'Chick' hot chocolate pot and cover, h. 15 cm

Est £60 - £80

- 214** A 1930's 'Three Little Pigs' musical jug by Wadeheath, h. 26 cm

Est £60 - £80



216



- 215** A George VI & Elizabeth coronation commemorative mug designed by Dame Laura Knight

Est £20 - £30

- 217** A Cherner Chair Company side chair designed by Norman Cherner in 1958, manufactured in Denmark in 2021, with label and certificate

Est £250 - £350

- 219** Charles & Ray Eames for Vitra, an Eames Aluminium Group table, the cushioned cherry veneered surface on two chromed supports and four splayed legs, 182 x 106 cm

Est £150 - £200

- 216** A Cherner Chair Company side chair designed by Norman Cherner in 1958, manufactured in Denmark in 2021, with label and certificate

Est £250 - £350

- 218** Luca Meda (Italian, 1936-1998) for Molteni & Co., a 'Portafinestra' cabinet designed in 1989 with a lockable door containing an inbuilt swing window, veneered in cherry, the lock labelled UniFor (part of the Molteni Group), 184 x 109 x 51 cm

Est £400 - £600



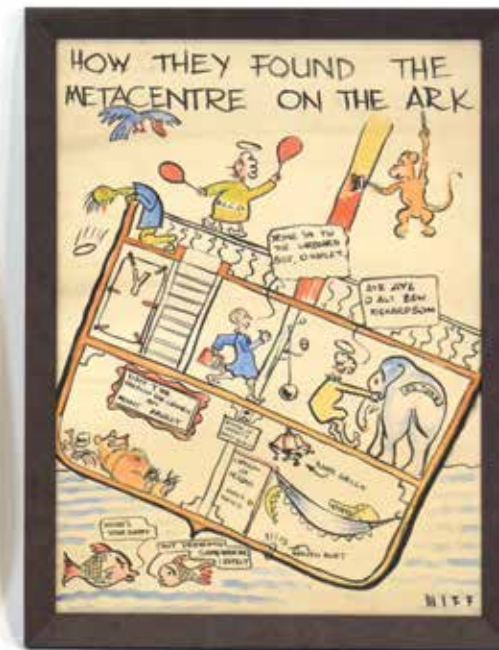
- 220** Isobel A.V. Watson (1930-2016), 'Crucifixion', embroidery, attribution verso, image 100 x 60 cm

Est £100 - £150



- 221** Miff (20th Century), 'Seen in the Heat Engines Lab' and 'How they found the Metacentre on the Ark', a pair of engineering cartons, signed, images 74 x 54 cm each (2)
*These were drawn in 1947 by a friend of the vendor's father on their graduated from Leeds University in engineering.

Est £300 - £400



- 222** A 1970's Danish spun aluminium open ceiling light
- Est £30 - £40**



- 225** A 1970's Danish cream enamelled pull-down ceiling light
- Est £30 - £40**

- 227** A 1970's Danish copper-coloured pendant ceiling light with perspex motifs
- Est £30 - £50**

- 228** Textiles: a collection of fabric off-cuts and panels including Marimekko, Lucienne Day style etc. together with an African batik panel (Qty)
- Est £40 - £60**

- 223** A 1970/80's Danish burnt umber pendant light
- Est £30 - £50**

- 224** A late 20th century white enamelled spherical ceiling light with a green interior
- Est £30 - £40**

- 226** A near pair of Danish white enamelled graduated ceiling lights of trumpet form, including one with a Horn label
- Est £60 - £100**

- 229** Ray Marshall (Canadian, 1913-1986), a pair of studio pottery scrolled mugs with sgraffito decoration, ink 'B' mark to the undersides (2)
- Est £50 - £80**



- 230** John Clappison for Hornsea Pottery, a pair of 1950's vases decorated in the black and white 'atomic' pattern (2)
- Est £50 - £80**

- 232** Robert Heal for Staples, a 'Ladderax' teak modular shelving system including a fall-front bureau, three shelves, two black metal uprights and the associated cross-members *VAT
- Est £150 - £200**

- 234** A Merrow Associated chromed occasional table of rectangular form with a smoked glass surface, 114 x 46 x 45 cm *VAT
- Est £80 - £120**

- 231** A 1960's British yellow melamine drawer-leaf dining table, 100 x 68 cm, together with four matching chairs
- Est £80 - £120**

- 233** A 1960's teak console table with two drawers on turned legs, w. 84 cm *VAT
- Est £50 - £80**

- 235** An Avalon teak sideboard, the three drawers flanked by a pair of sliding doors, on tapering legs, w. 162 cm *VAT
- Est £60 - £80**

238



240

A 1976 Mdina cased-glass bottle vase, signed, h. 19.5 cm, together with a Mdina drinking goblet (2)

Est £50 - £80

241

A pair of Danish Modernist silver-plated candlesticks stamped 'J&S Denmark', possibly Johannes Siggaard, h. 20.5 cm

Est £40 - £60

236

A set of four 1970's teak dining chairs with drop-in seats by McIntosh Furniture *VAT *SFP

Est £80 - £120

238

Paul Nash (1889-1946), 'Wood on the Downs', limited edition print numbered 527/850, unsigned, image 39 x 50 cm

Est £150 - £200

237

A 1950/60's oak magazine rack together with a 1970's teak example (2) *VAT

Est £30 - £40

239

Clive Rushbrook (20th Century), 'Early Spring 1979', signed, watercolour, image 26 x 36 cm

Est £30 - £50

239



242

A 1960's Danish teak sideboard cabinet, the four sliding doors enclosing an arrangement of shelves, on tapering legs, 200 x 41 x 116 cm

Est £300 - £400

243

A 1960's teak twin-pedestal 'Langdon' dressing table by Archie Shine, the rectangular mirror over four drawers, on square straight legs, w. 160 cm

Est £100 - £150

242



244



244

After Sir Howard Hodgkin (1923-2017), 'The Sky's the Limit', serigraph, edition of 500, published by The Lincoln Center, 76 x 83 cm

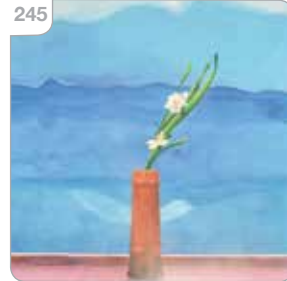
Est £40 - £60

245

After David Hockney (b. 1937), 'Mount Fuji and Flowers', off-set lithograph, 34 x 25 inches

Est £40 - £60

245



246

After David Hockney (b. 1937), 'Pool and Steps', off-set lithograph, 34 x 25 inches

Est £80 - £120

246



247 After Marc Chagall (1887-1985), 'Le Chevauchee' (Hors e Ride), off-set lithograph, no text, published by Pace Columbus for Exhibition in 1979, 31 x 22 inches (2 copies), together with 'The Magic Flute (Die Zauberflote)' for Metropolitan Opera, and Chagall at Pace Columbus (4)

Est £80 - £120

248 After René Magritte (Belgian, 1898-1967), 'La Magi Noire', off-set lithograph, 27 x 20 inches, together with 'L'Heureux Donateur' and 'Son of man' (3)

Est £50 - £80

249 After Alexander Calder (American, 1898-1976), off-set lithograph poster for Pace/Columbus Exhibition 1971, 25 x 32 inches

Est £80 - £120

250 After Francis Bacon, 'Georges a Bicyclette', Printed on Stonehenge paper, Edition of 500 published by Maeght, printed by Arte, 35.5 x 25.5 inches, together with a George DokuPil 'Fishing' poster for Leo Castelli's 1985 exhibition, a Jim Dine 'Still Life' poster and two 'Works on Paper' posters after Lucian Freud (5)

Est £60 - £80



251 A 1970's Danish brown enamelled single-spot adjustable floor lamp

Est £30 - £40

252 A 1970's Danish brown enamelled twin-spot floor lamp

Est £40 - £60

253 A 1970's Danish white enamelled single-spot floor lamp, the shade on an adjustable shaft

Est £30 - £40

254 A 1970's Danish white enamelled Type 738 pull-down ceiling light by Horn

Est £30 - £40

255 A late 20th century brown enamelled pendant light

Est £30 - £40

256 A late 20th century orange folded plastic ceiling light

Est £30 - £40

257 A 1970's Danish brown enamelled ceiling light of undulating form

Est £30 - £40

258 A late 20th century Danish black enamelled ceiling light with a gold coloured interior

Est £30 - £40

259 A late 20th century ceiling light constructed of mirrored plastic in scallop shaped form

Est £30 - £50

260 After Le Corbusier (Swiss-French, 1887-1965), an 'LC6' style dining table, the frosted oval glass resting on black metal supports joined to a laminate table frame, 303 x 153 cm

Est £200 - £300



261



Abdelhemani Hassani (Tanzanian, Tinga Tinga School), A gazelle and young, signed, lacquer on board, image 58 x 57 cm

Est £100 - £150

262



By. Aly (Tanzanian, Tinga Tinga School), Three Tanzanian Openbill storks, signed and dated 1977, lacquer on board, image 58 x 57 cm

Est £60 - £80

263

Attributed to Pierre Vandel (French, b. 1939), a 1970's gilt metal coffee table with a bevelled glass surface, 106 x 54 x 33 cm

Est £100 - £150

264

A 1960's Danish teak and marquetry fall-front vinyl record cabinet, designed by Poul Cadovius, on later splayed legs, 80 x 37 x 92 cm

Est £100 - £150



265

A 1950's walnut and beech occasional table by Morris of Glasgow, 58 x 41 x 43 cm

Est £40 - £60

266

A 1960's Finnish 'Pirkka' chair with a pine back, two-part seat and ebonised supports, designed by Ilmari Tapiovaara, manufacturer unknown

Est £150 - £200

268

A 1950/60's walnut and beech sliding door vinyl record cabinet, in the manner of Robin Day, 50 x 37 x 52 cm

Est £40 - £60

267

Arne Hovmand Olsen (Danish, 1919-1989), a nest of three 1960's teak occasional tables, max. 80 x 40 x 50 cm

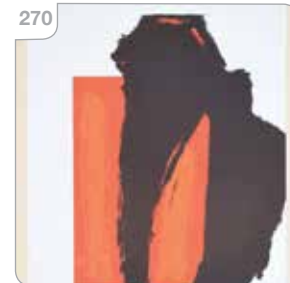
Est £100 - £150

269

After Andy Warhol (American, 1928-1987), 'Orange Marilyn, 1964', 1998 poster published by te Neues, 80 x 60 cm, together with 'Princess Diana, 1982' (2)

Est £40 - £60

270



270

After Robert Motherwell, 'Art Chicago', lithograph, Edition of 2000, 27 x 20 inches

Est £30 - £40



- 271** After Robert Motherwell, 'Art Chicago', lithograph, Edition of 2000, 27 x 20 inches
Est £30 - £40

- 273** After Banksy (b. 1974), 'Tesco Value Petrol Bomb', signed in the image/print, lithographic print, image 47.5 x 38 cm
Est £50 - £80

- 275** Gregory Brown (1887-1941), A Leatherhead transport poster, cut-down, image 56 x 54 cm, together with a Fred White 'The Rock on Which to Build' poster (2)
Est £80 - £120

- 272** Luca Scacchetti (Italian, 1952-2015) for Casa Poltrona Frau, a pair of 'Hydra Castor' chrome and leather upholstered two-seater sofas together with a pair of matching armchairs (4) *SFP
Est £300 - £500

- 274** A pair of 1960/70's blanc-de-chine table lamps of undulating form in the manner of Bergboms and Kaiser Leuchten, h. 48 cm excl. fittings
Est £100 - £150

- 276** A 1960's teak easy chair, the back rest comprising of six brass rods, with loose turquoise cushions *SFP
Est £80 - £120

- 277** A 1970's Danish teak and crossbanded drawer-leaf dining table by A.B.J. Mobelfabrik, stamped to the underside, design elsewhere attributed to Niels Moller (Danish, 1920-1982), 120-210 x 77 cm
Est £100 - £150

- 278** A pair of 1970/80's three-branch chandeliers with Murano glass shades, attributed to A.V. Mazzega (2)
Est £300 - £400

- 279** A 1970's 'Space Age' ceiling light with three mustard eyeball shades
Est £20 - £30



- 280** A 'Ram' chair, the wrought iron scrolled frame with arms and a blue drop-in seat designed by Andre Dubreuil (French, 1951-1922) *SFP
Est £600 - £800

- 281** A 1970's Merrow Associates chromed and glass occasional table of rectangular form, 61 x 45 x 36 cm
Est £80 - £120

- 282** A Model E1027 chrome and glass side table designed by Eileen Gray (1878-1976), di. 50 cm
Est £100 - £150



- 283** A Casson Conder Partnership architectural model of 'Charing Cross Office Building' modelled by Sharon Bury, within a plexiglass case, 80 x 37 x 35 cm
Est £100 - £150

- 286** Geoffrey Baxter (1922-1995) for Whitefriars, a textured range 'Drunken Bricklayer' vase in Meadow Green, h. 21 cm
Est £300 - £500

- 288** Geoffrey Baxter (1922-1995) for Whitefriars, a textured range 'Volcano' vase in Tangerine, h. 18 cm
Est £80 - £120

- 284** A BHS Lighting moulded plastic table lamp in the form of Guzzini, together with a BHS pendant shade and a teak table lamp base (3)
Est £40 - £60

- 287** Geoffrey Baxter (1922-1995) for Whitefriars, a textured range 'Nailhead' vase in Meadow Green, h. 17 cm
Est £40 - £60

- 289** Geoffrey Baxter (1922-1995) for Whitefriars, a textured range 'Zigzag' vase in Tangerine, h. 15.5 cm
Est £80 - £120

- 285** An Italian white marble table lamp, h. 36 cm incl. fittings
Est £60 - £80



290



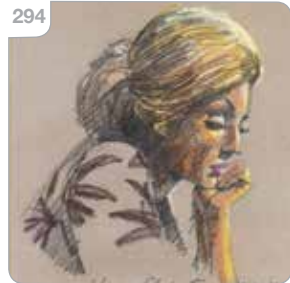
- 290** After Geoffrey Baxter (1922-1995) for Whitefriars, a textured range 'Mobile Phone' style vase in Kingfisher Blue, h. 17 cm, with a snapped-off unground pontil mark

Est £100 - £150

- 292** Geoffrey Baxter (1922-1995) for Whitefriars, a three-sided tapering vase in Ruby Red, together with two drinking vessels, a 'Bark'-type vase, two Kingfisher Blue ashtrays and a jug (7)

Est £60 - £80

294



- 291** Geoffrey Baxter (1922-1995) for Whitefriars, a group of textured range pieces in Tangerine including a 'Bark' vase, h. 23.5 cm, two 'Nailhead' vases, h. 17.5 cm, and a dish (4)

Est £80 - £120

- 293** Jean Isy de Botton (French, 1898-1978), 'Les Amoureux au Clair de Lune', signed and dated '64, labelled verso 'encre de chine et gouache', image 32.5 x 23.5 cm

Est £300 - £400

- 294** Stephen Ward (1912-1963), 'Veronica Clayton-Evans', signed and dated 18-10-59, pastel, image 28 x 22 cm

Est £100 - £150



- 295** Dame Lucie Rie D.B.E. (1902-1995), a stoneware conical bowl with a pale brown glaze and manganese rim, impressed seal mark, di. 14.5 cm, h. 7 cm *See lot 296 for the pair.

Est £700 - £1000

- 296** Dame Lucie Rie D.B.E. (1902-1995), a stoneware conical bowl with a pale brown glaze and manganese rim, impressed seal mark, di. 14 cm, h. 7 cm *See lot 295 for the pair.

Est £700 - £1000



297 Charlotte Perriand, Le Corbusier and Pierre Jeanneret for Cassina, an LC3 sofa, the black leather seats in a chromed frame, Cassina marks and serial/identification number 006337, w. 170 cm *SFP
Est £2000 - £2500



298 Arne Wahl Iversen (1927-2016) for Vinde Møbelfabrik, a 1960's Danish teak ladies writing desk, Model 56, with a raised superstructure, two lockable drawers and splayed legs, maker's stamps and model number to the underside, 100 x 68 x 83 cm
Est £1200 - £1500

299 Henry Rosengren Hansen for Brande Mobelindustri, a 1960's Danish Brazilian rosewood and crossbanded extending dining table with two fitted leaves, labelled to the underside, di. 119 cm, leaves w. 50 cm each CITES Article 10 Transaction Specific Ref: 24GBA102F2J80
Est £600 - £800



300 Arne Vodder (1926-2009) for Sibast, a set of six 1960's Danish Brazilian-rosewood Model 418 dining chairs upholstered with grey fleck wool *SFP CITES Article 10 Transaction Specific Ref: 24GBA10MBE9FT/24GBA10UEKTA4
Est £1800 - £2200

301 John & Sylvia Reid for Stag, a graduated pair of 1960's 'Fineline' Range teak chests with aluminium handles and matching legs, w. 101 and 76 cm (2)
Est £150 - £200

302 A 1973 Australian one sheet movie poster for 'Theatre of Blood' featuring Ian Hendry, United Artists, image 100 x 74 cm
Est £100 - £150



303 An Italian moulded plastic 'Fiona' lamp by Harvey Guzzini, sticker to the front, h. 33 cm
Est £300 - £500





- 304** A 1970's Danish woollen floor rug or wall hanging, the red ground decorated with a cockerel, 102 x 70 cm
Est £40 - £60

- 305** Peter Hvidt (1916-1986) & Orla Mølgaard Nielsen (1907-1993) for France & Sons, a 1960's Danish teak lounge chair, Model 148, with cream check wool by Danish Art Weaving, maker's badge to frame *SFP
Est £800 - £1200



- 306** Three rolls of 100% pure wool upholstery fabric by Danish Art Weaving including cream check 4.5 x 1.5 m, red fleck 1.6 x 1.4 m and pale blue 1.7 x 1.4 m (3)
Est £80 - £120

- 307** An Arabia of Finland 'Anemone' pattern hand-painted part dinner/tea service including a teapot, milk jug, sugar pot, six side plates, six tea cups and seven saucers
Est £100 - £150

- 308** A suite of handthrown 'Odette' porcelain by Soendergaard Design of Denmark including a teapot, milk jug, two sugar bowls, two side plates, two dinner plates and two large bowls
Est £40 - £60

- 309** Arno Thoner for Moygashel, a length of 1960's fabric with green geometric motifs, 4.6 x 1.2 m
Est £80 - £120

- 310** After Victor Vasarely (French-Hungarian, 1906-1997), 'Folklore Planetaire', Editions du Griffon Neuchatel, 1971, set of ten colour plates in a slip cover
Est £100 - £150

- 311** Finn Juhl (1912-1989) for France & Son, a 1960's Danish teak lounge chair, Model 136, upholstered in bluey purple wool by Danish Art Weaving, maker's badge to the frame *SFP
Est £1500 - £1800



- 312** Finn Juhl (1912-1989) for France & Son, a 1960's Danish teak lounge chair, Model 136, upholstered in bluey purple wool by Danish Art Weaving, maker's badge to the frame "SFP"

Est £1500 - £1800



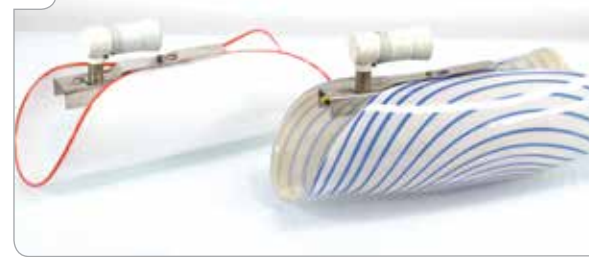
- 313** A 1970's Raleigh Chopper bicycle in purple with pink writing, wheel di. 16 and 12 inches

Est £500 - £700

- 314** Guillaume Delvigne (b.1979) for Fabbian, a contemporary 'Aerostat' hand-blown glass table lamp, h. 37 cm

Est £120 - £150

317



- 316** William Wilson and Harry Dyer for Whitefriars, a 1960's 'Knobbly' Range vase in ruby red, numbered 9842, h. 18.5 cm, together with a similar squat vase in amber (2)

Est £60 - £80

- 317** Two Italian wall lights with sculptural Murano glass shades by Vetri (2)

Est £200 - £300

- 318** A 1960's lemonade set in kingfisher blue including a jug, h. 30 cm, and six tumblers, together with two 1960's glass vessels (9)

Est £30 - £50

- 319** Stefano Giovannoni (Italian, b. 1954) for Magis, a set of three aluminium-finished 'Bombo' bar stools

Est £80 - £120

- 315** A 1970's teak cabinet, the two doors enclosing a contrasting beech interior, on square legs, 69 x 37 x 74 cm

Est £60 - £80



320 Jason John "JJ" Adams (b. 1978), 'Tattoo Monroe', signed and numbered 56/95, limited edition published by Wishbone Publishing Ltd, with coa, image 71 x 58 cm *Adams is a mixed media and digital 'British Pop and Lowbrow' artist.

Est £500 - £700

321 Jason John "JJ" Adams (b. 1978), 'Audrey Hepburn (Colour)', signed and numbered 110/195, limited edition published by Wishbone Publishing Ltd, with coa, image 75 x 59 cm *Adams is a mixed media and digital 'British Pop and Lowbrow' artist.

Est £500 - £700

322 Jason John "JJ" Adams (b. 1978), 'London's Calling', signed and numbered 156/195, limited edition published by Wishbone Publishing Ltd, with coa, image 72 x 49 cm *Adams is a mixed media and digital 'British Pop and Lowbrow' artist.

Est £500 - £700



323 Jason John "JJ" Adams (b. 1978), 'Love Gun', signed and numbered 143/195, limited edition published by Wishbone Publishing Ltd, with coa, image 75 x 60 cm *Adams is a mixed media and digital 'British Pop and Lowbrow' artist.

Est £450 - £550

324 Dunthorne (20th Century), 'Massacre at Atahualpa's Litter at Square of Casa Malca' signed and dated '52, oil on board, image 38 x 28 cm

Est £40 - £60

326



325 Richard Young for Merrow Associates, a Model '341' circular glass-topped occasional table on a chromed base, di. 99 cm

Est £80 - £120

326 Philippe Starck (French, b.1949) for Emeco, a set of three brushed aluminium 'Hudson' stools, manufacturer's marks to reverse (3)

Est £400 - £600



Hammer Prices - Bedford, May 2024 Sale

1 £40	46 £50	96 £55	142 £130	191 £160	237 £65	288 £150	335 £45	378 £75
2 £35	47 £170	97 £50	143 £24	192 £50	238 £45	289 £150	336 £45	379 £440
3 £40	48 £200	98 £30	144 £170	193 £26	239 £60	290 £45	337 £65	380 £300
4 £20	49 £150	101 £55	145 £160	197 £35	240 £40	291 £800	338 £30	382 £45
5 £65	50 £30	102 £70	146 £130	198 £120	241 £45	292 £300	339 £170	383 £40
6 £60	51 £22	103 £60	147 £130	199 £24	243 £65	293 £160	340 £170	384 £26
7 £50	52 £55	104 £60	148 £80	200 £550	247 £22	294 £95	342 £70	385 £24
8 £55	53 £75	105 £70	149 £70	201 £45	251 £30	295 £100	343 £85	390 £100
9 £170	54 £20	106 £5	150 £70	202 £20	252 £65	296 £55	344 £26	391 £480
10 £30	57 £60	107 £50	151 £20	203 £22	253 £10	298 £150	347 £20	392 £190
11 £200	58 £850	108 £65	152 £30	204 £280	254 £60	299 £90	348 £90	393 £190
12 £200	59 £260	109 £55	153 £20	205 £85	255 £75	300 £26	351 £50	394 £400
13 £120	60 £380	110 £85	154 £50	207 £30	256 £110	301 £35	353 £35	395 £140
14 £380	61 £55	111 £70	155 £220	209 £40	257 £45	302 £40	354 £50	396 £40
15 £380	62 £110	112 £55	156 £60	210 £50	258 £50	303 £45	355 £22	399 £70
16 £120	63 £100	113 £60	157 £80	211 £14	259 £40	304 £70	356 £40	401 £160
18 £40	64 £90	114 £170	158 £100	212 £170	260 £190	305 £50	357 £190	402 £240
19 £85	65 £440	115 £65	159 £45	213 £50	261 £90	306 £70	358 £700	404 £150
20 £60	67 £240	117 £55	160 £90	214 £440	262 £150	307 £80	359 £600	405 £140
21 £220	68 £55	118 £90	161 £50	215 £110	263 £160	308 £50	360 £400	406 £2600
22 £230	69 £260	119 £30	163 £300	216 £110	264 £120	309 £400	361 £220	407 £90
23 £40	70 £150	120 £35	167 £30	217 £220	265 £90	310 £140	365 £95	408 £60
24 £60	72 £70	121 £26	168 £28	218 £190	266 £80	311 £70	366 £150	409 £400
27 £340	73 £160	122 £40	169 £40	219 £460	267 £50	312 £130	367 £120	
28 £160	74 £1000	124 £130	171 £85	220 £10	268 £85	313 £200	372 £200	
29 £380	76 £110	125 £45	172 £220	221 £140	269 £260	314 £480	374 £140	
30 £320	77 £70	126 £75	173 £45	222 £360	270 £100	315 £280	376 £40	
31 £240	78 £45	127 £130	175 £160	223 £120	271 £22	316 £360	377 £80	
32 £80	79 £300	128 £35	176 £50	224 £240	272 £30	317 £95		
33 £100	80 £40	129 £40	177 £65	225 £70	274 £110	318 £40		
34 £55	81 £100	130 £14	178 £340	226 £70	275 £120	319 £150		
35 £80	82 £45	131 £130	179 £110	227 £130	276 £95	320 £120		
36 £55	83 £30	132 £65	180 £45	228 £55	277 £1100	321 £24		
37 £30	84 £55	133 £85	181 £45	229 £45	279 £20	322 £35		
38 £40	85 £60	134 £18	182 £75	230 £60	280 £60	323 £400		
39 £55	86 £26	135 £110	183 £20	231 £50	281 £200	324 £240		
40 £50	87 £45	136 £22	184 £40	232 £28	282 £160	325 £220		
41 £80	89 £65	137 £45	185 £26	233 £35	283 £20	326 £100		
42 £24	90 £40	138 £35	186 £35	233 £20	284 £30	327 £100		
43 £40	91 £1200	139 £80	187 £30	234 £65	285 £40	331 £85		
44 £65	92 £280	140 £45	189 £750	235 £70	286 £110	332 £45		
45 £80	93 £190	141 £50	190 £200	236 £50	287 £60	333 £30		

Next Sale

Bedford Auction Centre
Friday 15th November 2024
Commencing at 10.30am

Visit our website for full details
www.peacockauction.co.uk

Vintage Hi-Fi Equipment

TO BE SOLD BY LIVE AUCTION

Saturday 17th August 2024

Commencing at 10am

Viewing:

Friday 16th August 9am to 8pm

Saturday 17th August 9am to 10am

A single owner collection including a large consignment of vintage turntables, amplifiers, tuners, reel-to-reel players etc.

Bedford Auction Centre
Wallis Way, Bedford, Bedfordshire, MK42 0PE
01234 266 366 or info@peacockauction.co.uk

peacockauction.co.uk



Jewellery, Coins & Watches

TO BE SOLD BY LIVE AUCTION

Friday 6th September 2024

Commencing after 2pm

Viewing:

Friday 30th August 9am to 8pm

Saturday 31st August 9am to 1pm

Thursday 5th September 9am to 5pm

Morning of sale from 9am to 10:30am

Bedford Auction Centre

Wallis Way, Bedford, Bedfordshire, MK42 0PE

01234 266 366 or info@peacockauction.co.uk

[peacockauction.co.uk](https://www.peacockauction.co.uk)